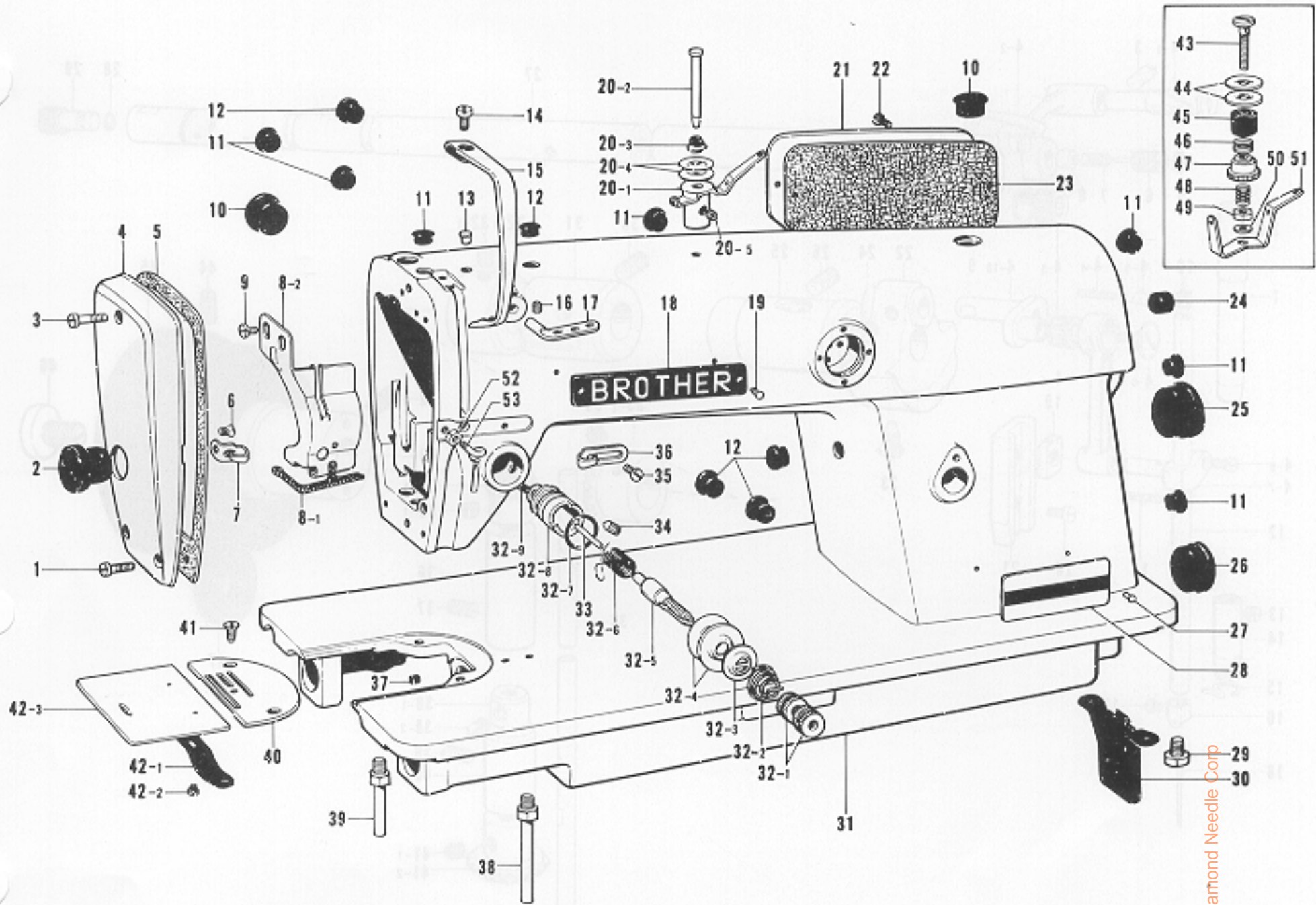


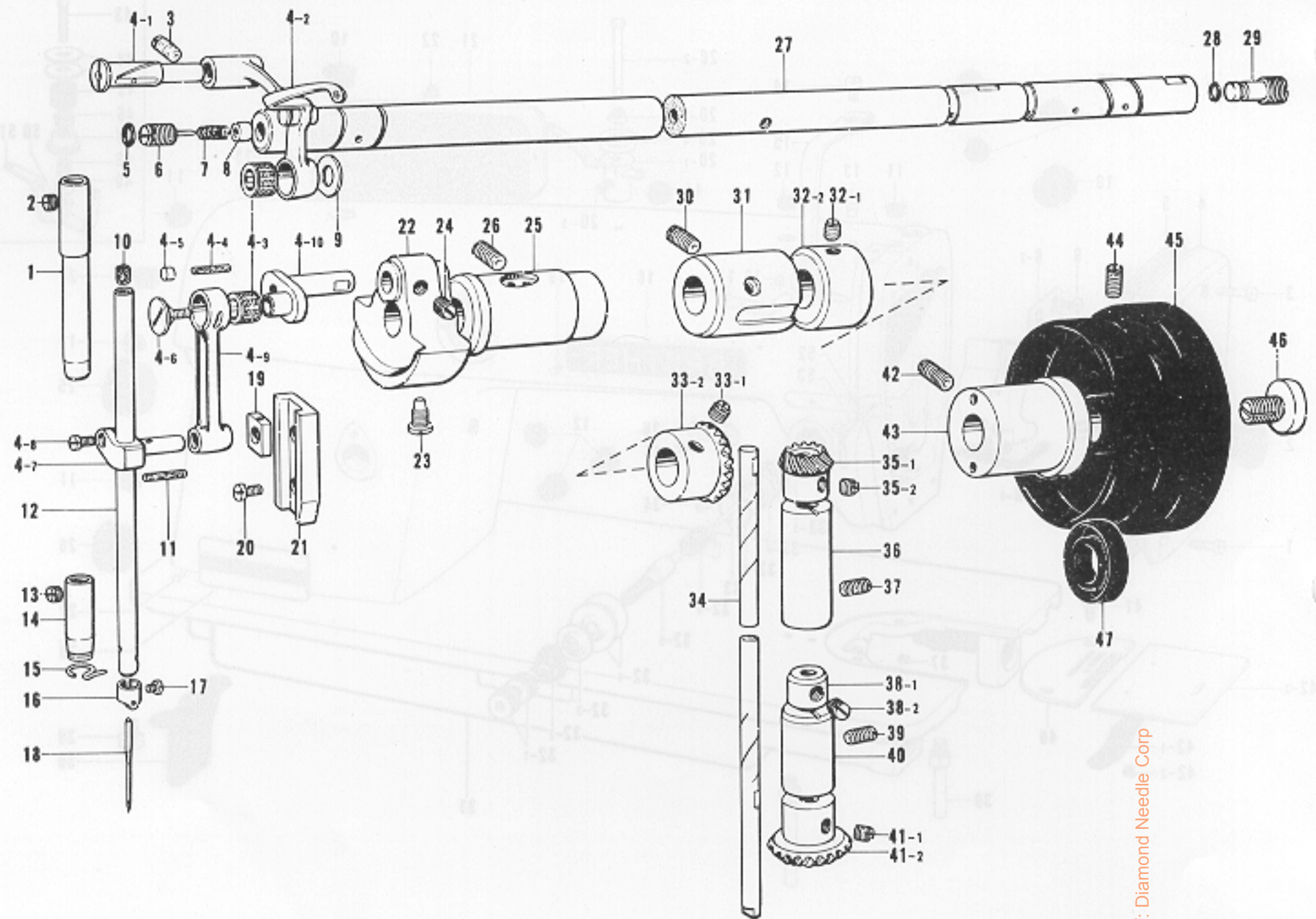
A. Machine Body



Ref. No.	Name of Parts	Q'ty	Parts No.	Assembly No.	Ref. No.	Name of Parts	Q'ty	Parts No.	Assembly No.
A-1	Screw	2	009671-0-13		A-30	Pump Cover	1	118672-0-01	
A-2	Oil Cap	1			A-31	Arm Bed	1		
A-3	Screw	1	009671-8-13		A-32-1	Nut	2	100136-0-01	A-32 Tension Regulator Assembly
A-4	Face Plate	1			A-32-2	Tension Spring	1		
A-5	Packing	1	109195-0-01		A-32-3	Tension Disc Washer	1	100134-0-01	
A-6	Screw	1			A-32-4	Tension Disc	2	145446-0-01	
A-7	Face Plate Thread Guide	1			A-32-5	Tension Stud	1	100398-0-01	
A-8-1	Wick	1	148302-0-01	A-8 Oil Stopper Plate Assembly	A-32-6	Thread Take-up Spring	1		
A-8-2	Oil Stopper Plate	1			A-32-7	Packing	1	114294-0-01	
A-9	Screw	2	009670-5-12		A-32-8	Upper Tension Regulator Bracket	1	144741-0-01	
A-10	Oil Cap	2	104449-0-01		A-32-9	Screw	1	100402-0-04	
A-11	Oil Cap	7	104450-0-01		A-33	Tension Release Pin	1		
A-12	Oil Cap	5	104821-0-01		A-34	Screw	1	103950-0-02	
A-13	Oil Cap	1	111865-0-01		A-35	Screw	1	009670-6-14	
A-14	Screw	1	009680-7-13		A-36	Arm Thread Guide	1	113316-0-01	
A-15	Thread Take-up Cover	1	140885-0-01		A-37	Oil Cap	1		
A-16	Screw	1	151602-0-02		A-38	Bed Leg L	1	104829-1-01	
A-17	Thread Retainer	1	114931-0-01		A-39	Bed Leg S	1	104830-1-01	
A-18	Name Plate BROTHER	1			A-40	Needle Plate	1		
A-19	Screw	2	124918-0-01		A-41	Screw	2	100032-0-03	
A-20-1	Pretension	1		A-20 Pretension Assembly	A-42-1	Slide Plate Spring	1	114561-0-01	A-42 Slide Plate Assembly 180018-0-01
A-20-2	Pretension Stud	1			A-42-2	Screw	2	122771-0-01	
A-20-3	Spring	1	144505-0-00		A-42-3	Slide Plate	1		
A-20-4	Thread Guide Disc	2	144504-0-01		A-43	Pre-Tension Stud	1	153111-0-01	
A-20-5	Screw	1	102716-0-03		A-44	Thread Guide Disc	2	144504-0-01	
A-21	Rear Cover	1			A-45	Pre-Tension Disc Washer	1	146206-0-01	
A-22	Screw	4	009670-8-12		A-46	Pre-Tension Spring	1	146058-0-01	
A-23	Packing	1	118778-0-01		A-47	Pre-Tension Nut	1	146059-0-01	
A-24	Oil Cap	2	104832-0-01		A-48	Spring	1	146060-0-00	
A-25	Oil Cap	1	118675-0-01		A-49	Nut	1	105234-0-01	
A-26	Oil Cap	1	108520-0-01		A-50	Washer	1	025680-2-34	
A-27	Model Plate Pin	2			A-51	Thread Guide Plate	1	146055-0-01	
A-28	Model Plate	1			A-52	Nut	1	021660-1-02	
A-29	Bolt	2	140704-0-01		A-53	Arm Thread Guide L	1	145524-0-01	

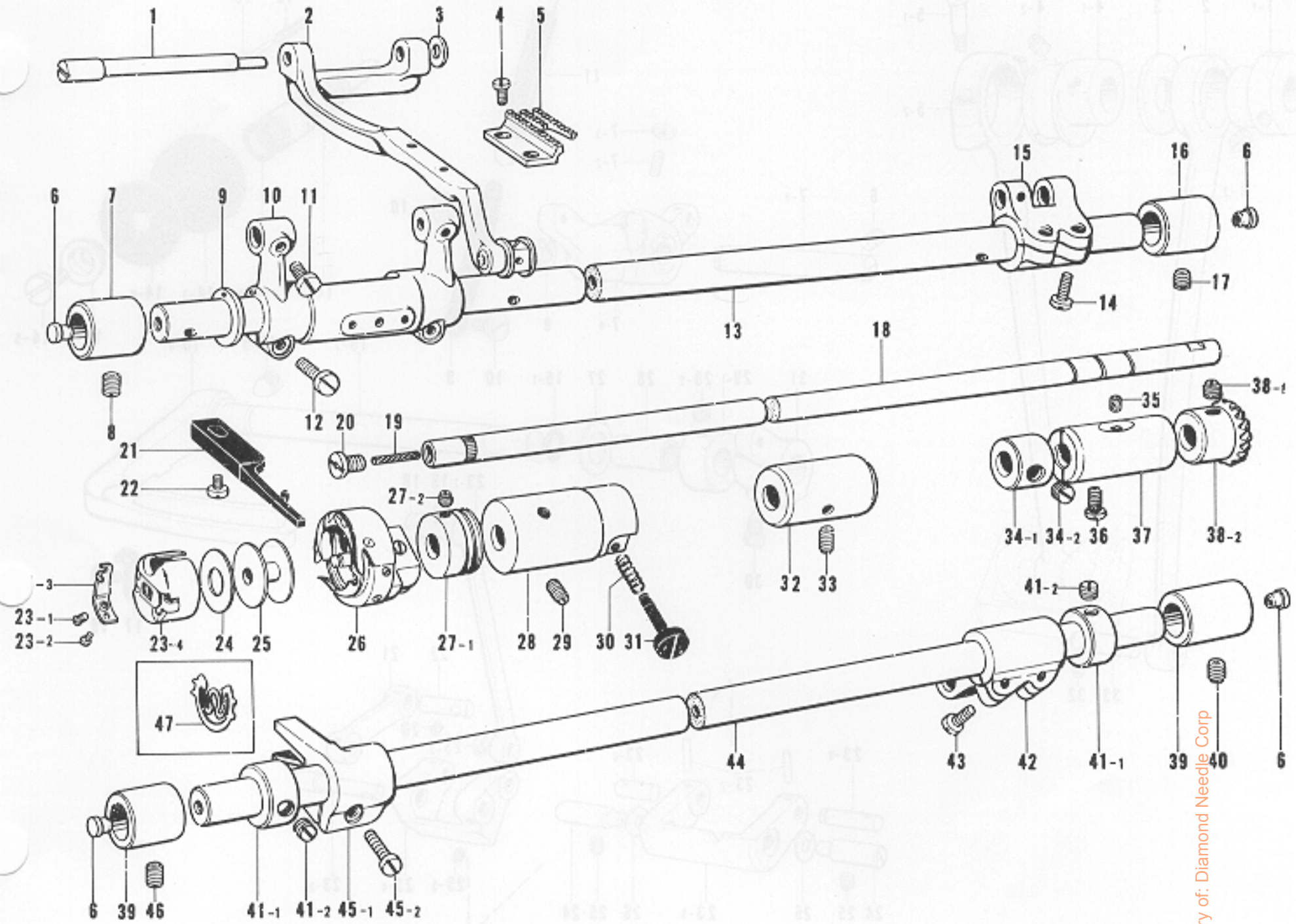
★Parts A-43~A-53 are for -100--200--400 and -500 type specification.

B. Upper Shaft and Needle Bar Mechanism



Ref. No.	Name of Parts	Q'ty	Parts No.	Assembly No.	Ref. No.	Name of Parts	Q'ty	Parts No.	Assembly No.
B-1	Needle Bar Bushing Upper	1	117242-0-01		B-28	Packing	1	081002-6-70	
B-2	Screw	1	100260-0-01		B-29	Oil Screw Right for Upper Shaft	1	104555-0-01	
B-3	Screw	1	013761-4-10		B-30	Screw	1	013761-4-10	
B-4-1	Stud	1	111468-0-01	B-4 Thread Take-up Lever Assembly	B-31	Upper Shaft Bushing Inter Mediate	1	140726-0-00	
B-4-2	Thread Take-up Lever	1			B-32-1	Screw	2	151604-0-01	B-32 Collar 181994-0-01
B-4-3	Needle Roller Bearing	2			B-32-2	Collar	1		
B-4-4	Felt	1	145624-0-00		B-33-1	Screw	2	100251-0-01	B-33 Upper Shaft Gear Assembly 180022-0-01
B-4-5	Cap	1			B-33-2	Upper Shaft Gear	1		
B-4-6	Screw	1	145465-0-01		B-34	Vertical Shaft	1	144868-0-01	B-35 Vertical Shaft Gear Assembly 180957-0-01
B-4-7	Needle Bar Clamp	1	111237-0-01		B-35-1	Vertical Shaft Gear	1		
B-4-8	Screw	1	140004-0-01		B-35-2	Screw	2	100251-0-01	
B-4-9	Needle Bar Connector	1			B-36	Vertical Shaft Upper Bushing	1	142708-0-00	
B-4-10	Needle Bar Crank	1			B-37	Screw	1	013760-6-10	
B-5	Packing	1	118770-0-01	B-38-1	Collar	1		B-38 Collar 118759-0-01	
B-6	Oil Adjusting Screw for Upper Shaft	1	140412-0-01	B-38-2	Screw	2	101706-0-01		
B-7	Spring	1	116799-0-01	B-39	Screw	1	013761-4-10		
B-8	Oil Bushing	1	140357-0-01	B-40	Vertical Shaft Lower Bushing	1	142709-0-00		
B-9	Washer	1	110367-0-01	B-41-1	Screw	3	100251-0-01	B-41 Vertical Shaft Gear Assembly 180959-0-01	
B-10	Needle Bar Cap	1	111863-0-01	B-41-2	Vertical Shaft Lower Gear	1			
B-11	Wick	1	108809-0-01	B-42	Screw	1	013760-6-10		
B-12	Needle Bar	1		B-43	Upper Shaft Bushing R	1	146331-0-01		
B-13	Screw	1	100260-0-01	B-44	Screw	2	013761-4-10		
B-14	Needle Bar Bushing Lower	1		B-45	Pulley	1			
B-15	Thread Guide Under	1	100573-0-01	B-46	Screw	1	104478-0-01		
B-16	Needle Bar Thread Guide	1		B-47	Oil Seal	1	101487-0-01		
B-17	Screw	1	140553-0-01						
B-18	Needle	1							
B-19	Needle Bar Guide Slide Block	1	102630-0-01						
B-20	Screw	2	009670-6-12						
B-21	Needle Bar Guide	1	102631-0-01						
B-22	Thread Take-up Crank	1							
B-23	Screw	1	104464-0-01						
B-24	Screw	2	100251-0-01						
B-25	Upper Shaft Bushing Left	1	111459-0-01						
B-26	Screw	1	013761-4-10						
B-27	Upper Shaft	1	118821-0-01						

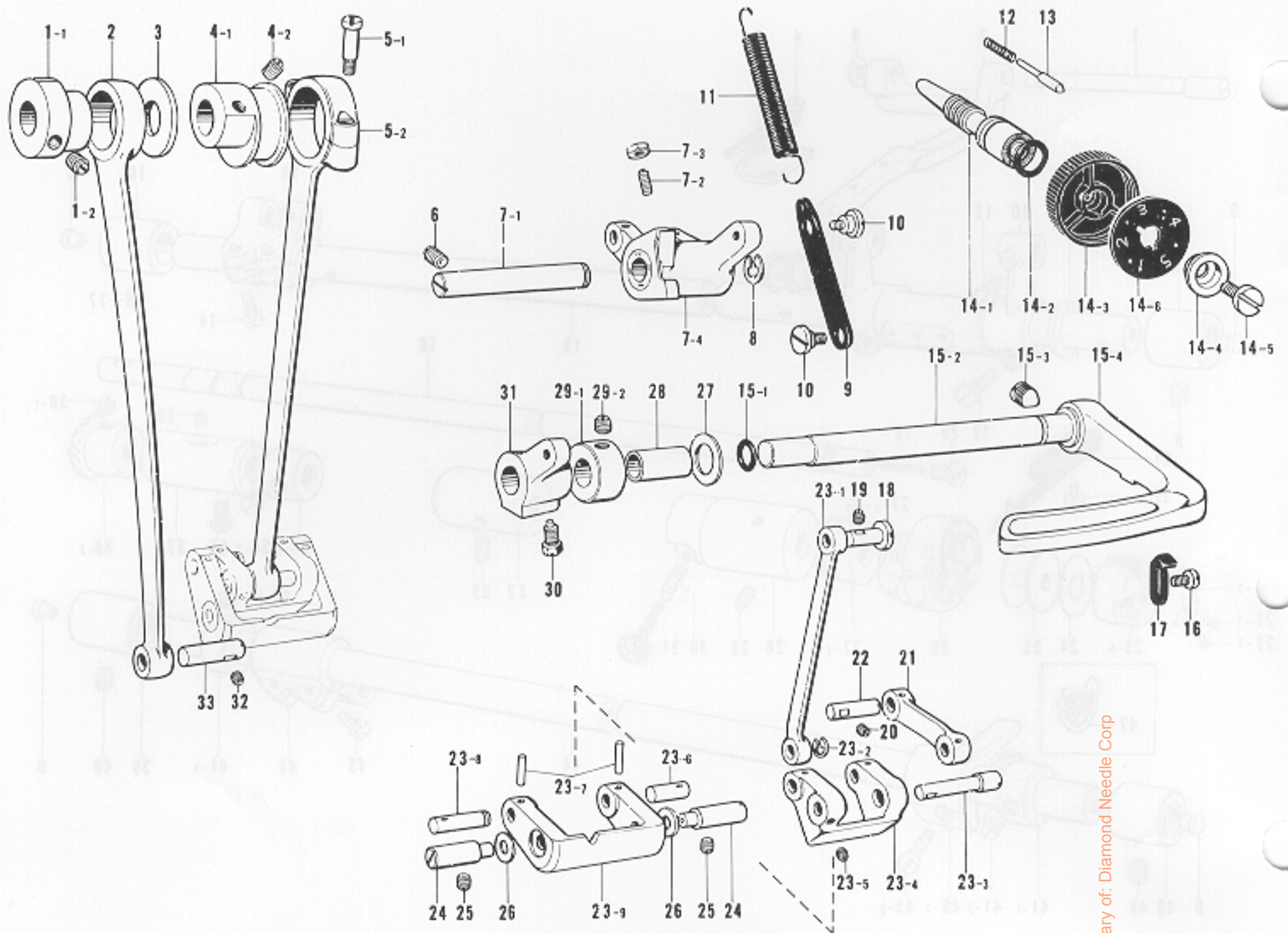
C. Lower Shaft and Feed Mechanism



From the library of: Diamond Needle Corp

Ref. No.	Name of Parts	Q'ty	Parts No.	Assembly No.	Ref. No.	Name of Parts	Q'ty	Parts No.	Assembly No.
C-1	Feed Bar Shaft	1	116917-0-01		C-29	Screw	1	151603-0-02	
C-2	Feed Bed	1	118845-0-01		C-30	Spring	1	116794-0-01	
C-3	Ring	1	115663-0-01		C-31	Screw	1	145534-0-01	
C-4	Screw	2	100080-0-03		C-32	Lower Shaft Bushing Middle	1	118762-0-00	
C-5	Feed Dog	1			C-33	Screw	1	151607-0-01	
C-6	Oil Cap	4	111865-0-01		C-34-1	Collar	1		C-34
C-7	Feed Shaft Bushing Small	1	116766-0-01		C-34-2	Screw	2	101706-0-03	Collar 181995-0-01
C-8	Screw	1	101706-0-01		C-35	Felt	1	107155-0-01	
C-9	Thrust Ring	1	116920-0-01		C-36	Screw	1	121007-0-01	
C-10	Feed Bar Arm	1	145510-0-00		C-37	Lower Shaft Bushing Right	1	104520-0-00	
C-11	Screw	2	104908-0-01		C-38-1	Screw	2	100251-0-01	C-38
C-12	Screw	2	009681-2-12		C-38-2	Lower Shaft Gear	1		Lower Shaft Gear Assembly 180960-0-01
C-13	Feed Rock Shaft	1	142573-0-01		C-39	Feed Shaft Bushing Small	2	116766-0-01	
C-14	Screw	2	009711-2-12		C-40	Screw	1	100251-0-01	
C-15	Feed Rock Shaft Arm	1	148286-0-01		C-41-1	Collar	2		C-41
C-16	Feed Shaft Bushing Left	1	116919-0-01		C-41-2	Screw	4	101706-0-01	Collar Assembly 180321-0-01
C-17	Screw	1	101706-0-01		C-42	Feed Rock Shaft Arm	1	116768-0-01	
C-18	Lower Shaft	1			C-43	Screw	2	009681-2-12	
C-19	Felt	1			C-44	Feed Lifting Rock Shaft	1	142572-0-01	
C-20	Screw	1	109173-0-01		C-45-1	Feed Lifting Arm	1		C-45
C-21	Bobbin Case Holder Position Bracket	1	140757-0-01		C-45-2	Screw	1	009681-4-12	Feed Lifting Arm Assembly 180322-0-01
C-22	Screw	1			C-46	Screw	1	101706-0-01	
C-23-1	Spring Adjusting Screw	1	181937-0-01	C-23 Bobbin Case Assembly	C-47	Bobbin Presser Spring	1		
C-23-2	Spring Set Screw	1	181938-0-01						
C-23-3	Lower Thread Adjusting Spring	1	192392-0-01						
C-23-4	Bobbin Case	1							
C-24	Bobbin Case Sheet	1							
C-25	Bobbin	1	146290-0-01						
C-26	Rotary Hook Assembly	1							
C-27-1	Oil Stopper	1		C-27 Oil Stopper Assembly					
C-27-2	Screw	2	151601-0-02						
C-28	Lower Shaft Bushing Left	1	118761-0-00						

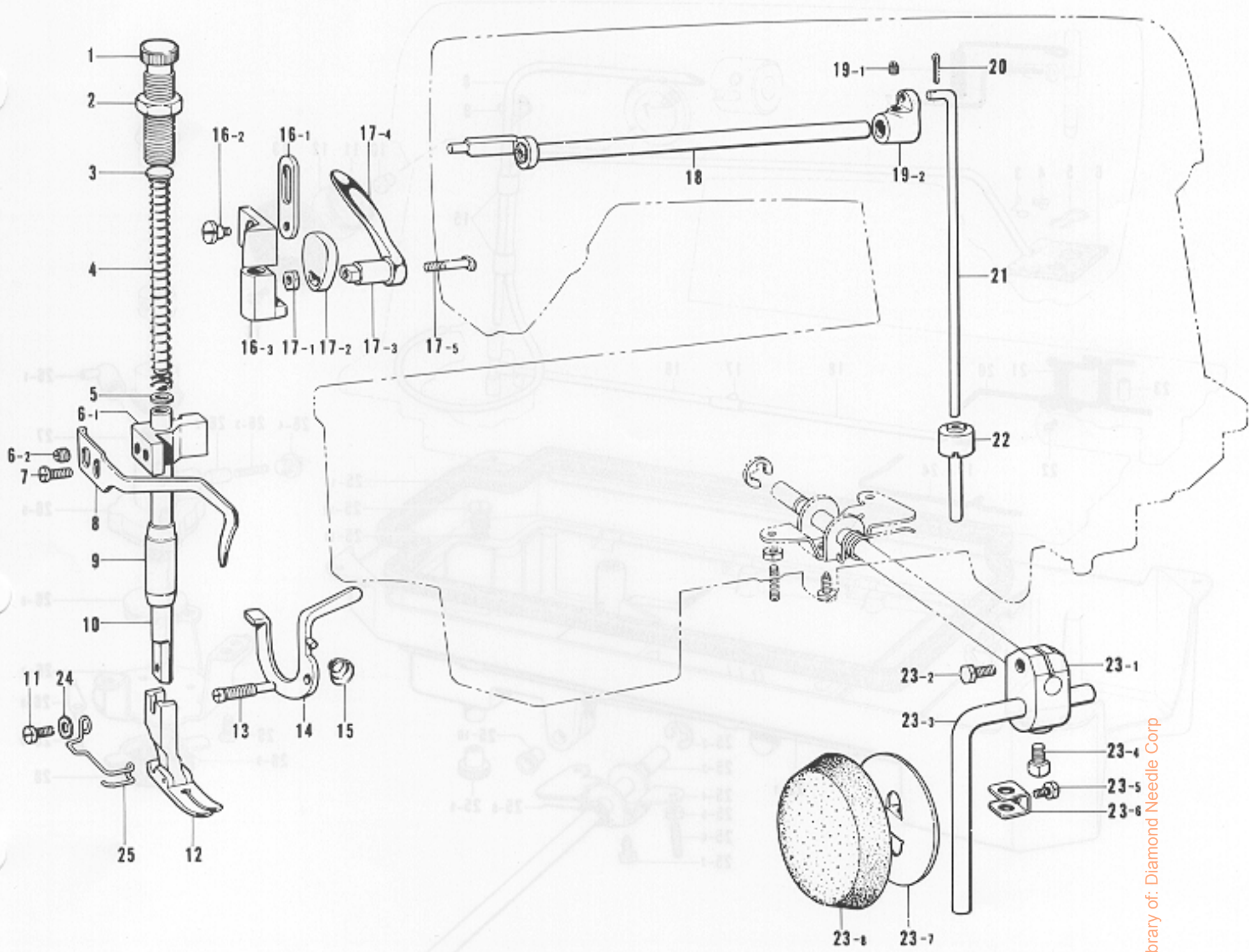
D. Feed Mechanism



From the library of: Diamond Needle Corp

Ref. No.	Name of Parts	Qty	Parts No.	Assembly No.	Ref. No.	Name of Parts	Qty	Parts No.	Assembly No.
D- 1-1	Vertical Feed Eccentric Wheel	1		D-1 Eccentric Wheel 180791-0-01	D-16	Screw	1	009680-7-14	
D- 1-2	Screw	2	151604-0-01		D-17	Reverse Lever Stopper	1	118865-0-01	
D- 2	Vertical Feed Connecting Rod	1	118758-0-01		D-18	Pin	1	118713-0-01	
D- 3	Stopper	1	101482-0-01		D-19	Screw	1	151601-0-02	
D- 4-1	Eccentric Wheel	1		D-4 Eccentric Wheel	D-20	Screw	1	151601-0-02	
D- 4-2	Screw	2	151604-0-01		D-21	Lever Feed Connecting Rod	1	118736-0-01	
D- 5-1	Screw	2	144712-0-01	D-5 Crank Rod 118725-0-01	D-22	Feed Rock Shaft Arm Pin	1	118740-0-01	
D- 5-2	Crank Rod	1			D-23-1	Lever Regulator Connecting Rod	1	118730-0-01	D-23 Feed Regulator Assembly 118727-0-01
D- 6	Screw	1	151604-0-01		D-23-2	Stop Ring	1	048040-3-42	
D- 7-1	Feed Controller Shaft	1	118744-0-01	D-7 Feed Controller Assembly 153142-0-01	D-23-3	Stud	1	118737-0-01	
D- 7-2	Screw	1	151607-0-01		D-23-4	Lever Feed Link	1	118729-0-01	
D- 7-3	Nut	1	105234-0-01		D-23-5	Screw	1	151601-0-02	
D- 7-4	Feed Controller	1			D-23-6	Stud Small	1	118732-0-01	
D- 8	Stop Ring	1	048070-3-42		D-23-7	Pin	2	118733-0-01	
D- 9	Connecting Plate	1	118746-0-01		D-23-8	Stud Large	1	118731-0-01	
D-10	Screw	2	112072-0-01		D-23-9	Feed Regulator	1		
D-11	Spring	1			D-24	Feed Regulator Shaft	2	118734-0-01	
D-12	Spring	1	100328-0-01		D-25	Screw	2	151604-0-01	
D-13	Pin	1	100327-0-01		D-26	Washer	2	118735-0-01	
D-14-1	Length Control Screw	1	109151-1-01	D-14 Length Control Assembly 181482-0-01	D-27	Washer	1	025100-1-30	
D-14-2	Packing	1	108549-0-01		D-28	Collar	1	118748-0-01	
D-14-3	Length Control Dial	1	153168-0-01		D-29-1	Collar	1		D-29 Collar 118824-0-01
D-14-4	Washer	1	142746-0-02		D-29-2	Screw	2	151604-0-01	
D-14-5	Screw	1	142747-0-02		D-30	Bolt	1	108749-0-01	
D-14-6	Feed Regulator Plate	1	151507-0-01		D-31	Feed Regulator Bracket	1	118747-0-01	
D-15-1	Packing	1	104564-0-01	D-15 Reverse Lever Assembly	D-32	Screw	1	151601-0-02	
D-15-2	Feed Controller Lever Shaft	1	118751-0-01		D-33	Feed Rock Shaft Arm Pin	1	109153-0-01	
D-15-3	Screw	1	015771-0-12						
D-15-4	Reverse Lever	1							

E. Presser Foot and Knee Lifter Mechanism



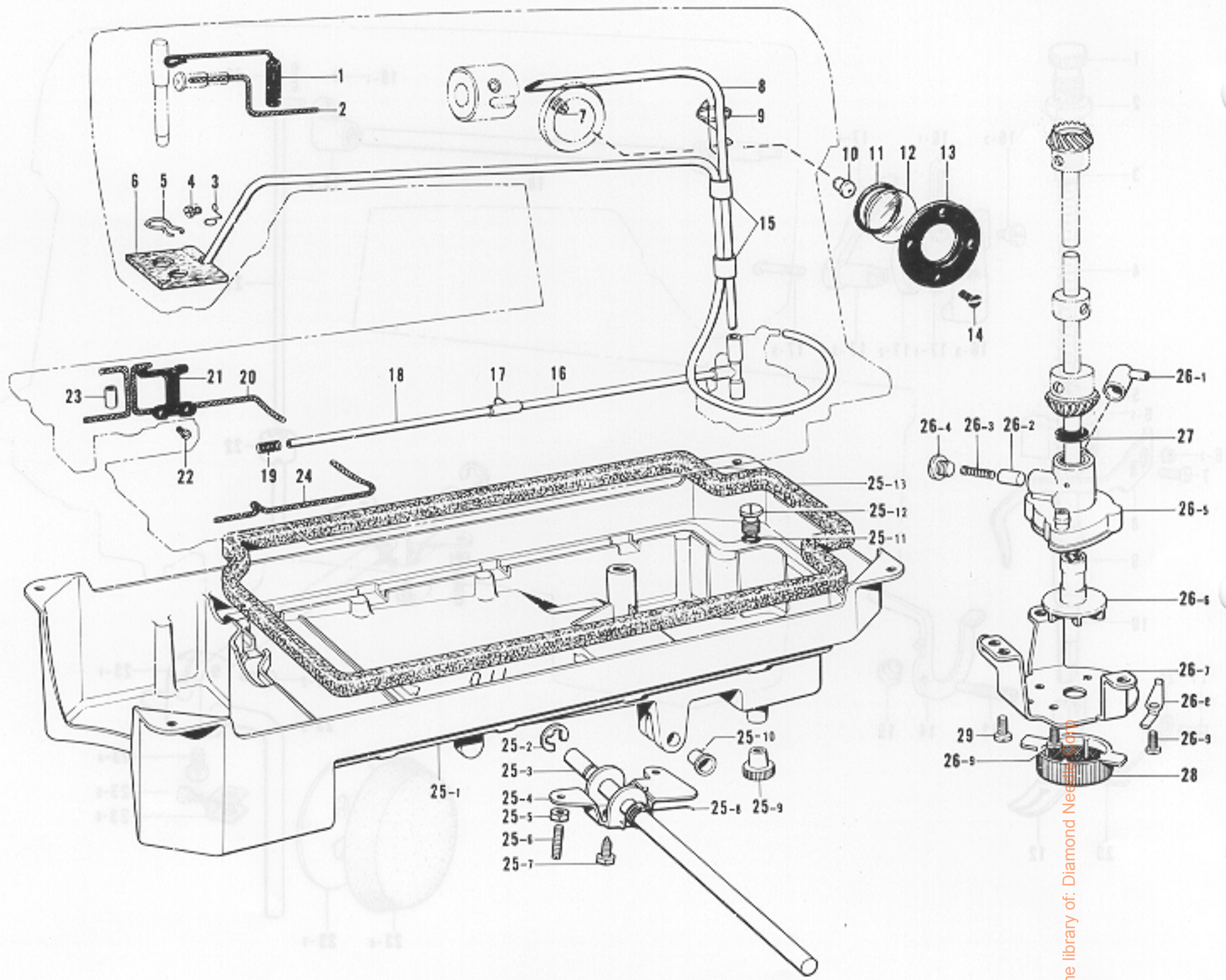
From the library of: Diamond Needle Corp

Ref. No.	Name of Parts	Q'ty	Parts No.	Assembly No.	Ref. No.	Name of Parts	Q'ty	Parts No.	Assembly No.
E-1	Screw	1	141207-0-01		E-17-1	Nut	1	021680-2-02	E-17
E-2	Nut	1	147846-0-01		E-17-2	Presser Bar Lifting Cam	1	142015-0-01	Presser Bar
E-3	Presser Spring Bar	1	141208-0-01		E-17-3	Presser Bar Lifting Shaft	1	142017-0-01	Lifting Lever
E-4	Spring	1	141728-0-01		E-17-4	Presser Bar Lifting Lever	1		Assembly
E-5	Washer	1	140407-0-01		E-17-5	Screw	1	142018-0-01	142014-0-01
E-6-1	Presser Bar Bracket	1		E-6	E-18	Knee Lifter Upper Crank Shaft	1	109145-0-01	
E-6-2	Screw	1	151604-0-01	Presser Bar Assembly 180102-0-01	E-19-1	Screw	1	100251-0-01	E-19
E-7	Screw	1	009680-7-13		E-19-2	Knee Lifter Crank Upper	1		Knee Lifter Crank Upper Assembly 142756-0-01
E-8	Presser Bar Bracket Thread Guide	1	111469-0-01		E-20	Pin	1	045161-0-00	
E-9	Presser Bar Bushing	1	111467-0-01		E-21	Knee Lifter Connecting Rod	1	141168-0-01	
E-10	Presser Bar	1	111466-0-01		E-22	Knee Lifter Complying Bar	1	145573-0-00	
E-11	Screw	1	001670-8-14		E-23-1	Knee Lifter Joint	1	146039-0-01	
E-12	Presser Foot	1			E-23-2	Bolt	1	017762-0-13	
E-13	Hinge Screw	1			E-23-3	Knee Lifter Bar	1	104619-0-02	E-23
E-14	Tension Release Lever	1			E-23-4	Bolt	1	100463-0-01	Knee Lifter Assembly 181427-0-01
E-15	Tension Release Lever Spring	1			E-23-5	Bolt	1	110087-0-01	
E-16-1	Presser Bar Lifting Connector	1	109144-0-01	E-16	E-23-6	Knee Lifter Plate Stopper	1	114967-0-01	
E-16-2	Screw	1	100294-0-01	Presser Bar Lifting Assembly 181623-0-01	E-23-7	Knee Lifter Plate	1	114966-0-01	
E-16-3	Presser Bar Lifting Bracket	1	100290-0-01		E-23-8	Knee Lifter Cover	1	140503-0-01	
					E-24	Washer	1		
					E-25	Finger Guard	1		

↑Parts E-22-23 are for -100-200 and -400 type specification.

F. Lubrication

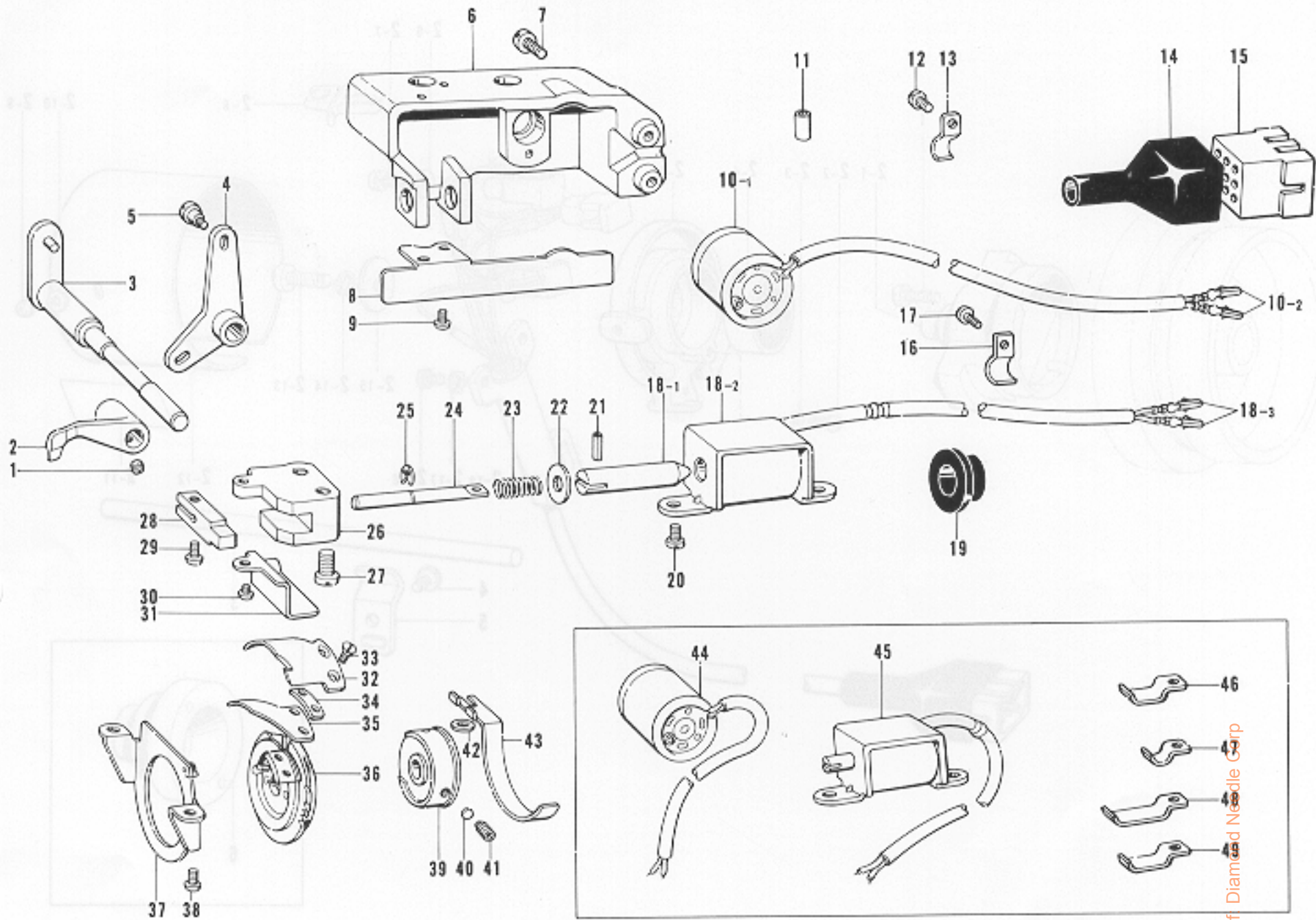
E. Presser Foot and Knee Lifter Mechanism



From the library of: Diamond Needle Co.

Ref. No.	Name of Parts	Q'ty	Parts No.	Assembly No.	Ref. No.	Name of Parts	Q'ty	Parts No.	Assembly No.	
F- 1	Wick	1	108804-0-01		F-25- 4	Knee Lifter	1	146037-0-01	F-25 Oil Pan Assembly	
F- 2	Wick	1	109405-0-01		F-25- 5	Nut	2	100022-0-04		
F- 3	Tube Stopper	1	148806-0-01		F-25- 6	Screw	2	104885-0-01		
F- 4	Screw	1	009670-5-12		F-25- 7	Bolt	1	146367-0-01		
F- 5	Felt Support	1	145737-0-01		F-25- 8	Spring	1			
F- 6	Dust Cover with Tube	1	145792-0-01		F-25- 9	Oil Cap	1	140480-0-01		
F- 7	Screw	1	151603-0-02		F-25-10	Knee Lifter Shaft Bushing	2	149578-0-00		
F- 8	Upper Oil Tube	1	146329-0-00		F-25-11	O Ring	1	081007-0-70		
F- 9	Tube Guard	1	146326-0-01		F-25-12	Screw	1	140518-0-01		
F-10	Oil Hole Bolt for Oil Gauge	1	143196-0-01		F-25-13	Packing	1	146040-0-01		
F-11	Packing	1	081014-6-70		F-26- 1	Tube Joint	1	144878-0-01		F-26 Pump Body Assembly 181476-1-01
F-12	Oil Gauge Window	1	104547-0-01		F-26- 2	Plunger	1	144875-0-01		
F-13	Oil Gauge Flange	1	104546-0-01		F-26- 3	Spring	1	144876-0-01		
F-14	Screw	4	102538-0-02		F-26- 4	Screw	1	112467-0-02		
F-15	Vinyl Tube	2	118996-0-00		F-26- 5	Pump Body	1	148848-0-01		
F-16	Oil Tube	1	146319-0-01		F-26- 6	Pump Propeller	1	148849-0-01		
F-17	Tube Joint	1	146324-0-01		F-26- 7	Pump	1	144869-0-01		
F-18	Vinyl Tube	1	146323-0-00		F-26- 8	Spring	2	144874-0-01		
F-19	Spring	1	100328-0-01		F-26- 9	Screw	4	009670-8-12		
F-20	Wick	1	108801-0-01		F-27	Oil Stopper	1	146196-0-01		
F-21	Wick Supporter	1	109171-0-01		F-28	Pump Filter	1	144872-0-01		
F-22	Screw	2	009679-3-12		F-29	Screw	3	009680-7-13		
F-23	Vinyl Tube	1	104566-0-01							
F-24	Wick	1	108802-0-01							
F-25-1	Oil Pan	1		F-25 Oil Pan Assembly						
F-25-2	Stop Ring	1	146293-0-01							
F-25-3	Knee Lifter Shaft	1								

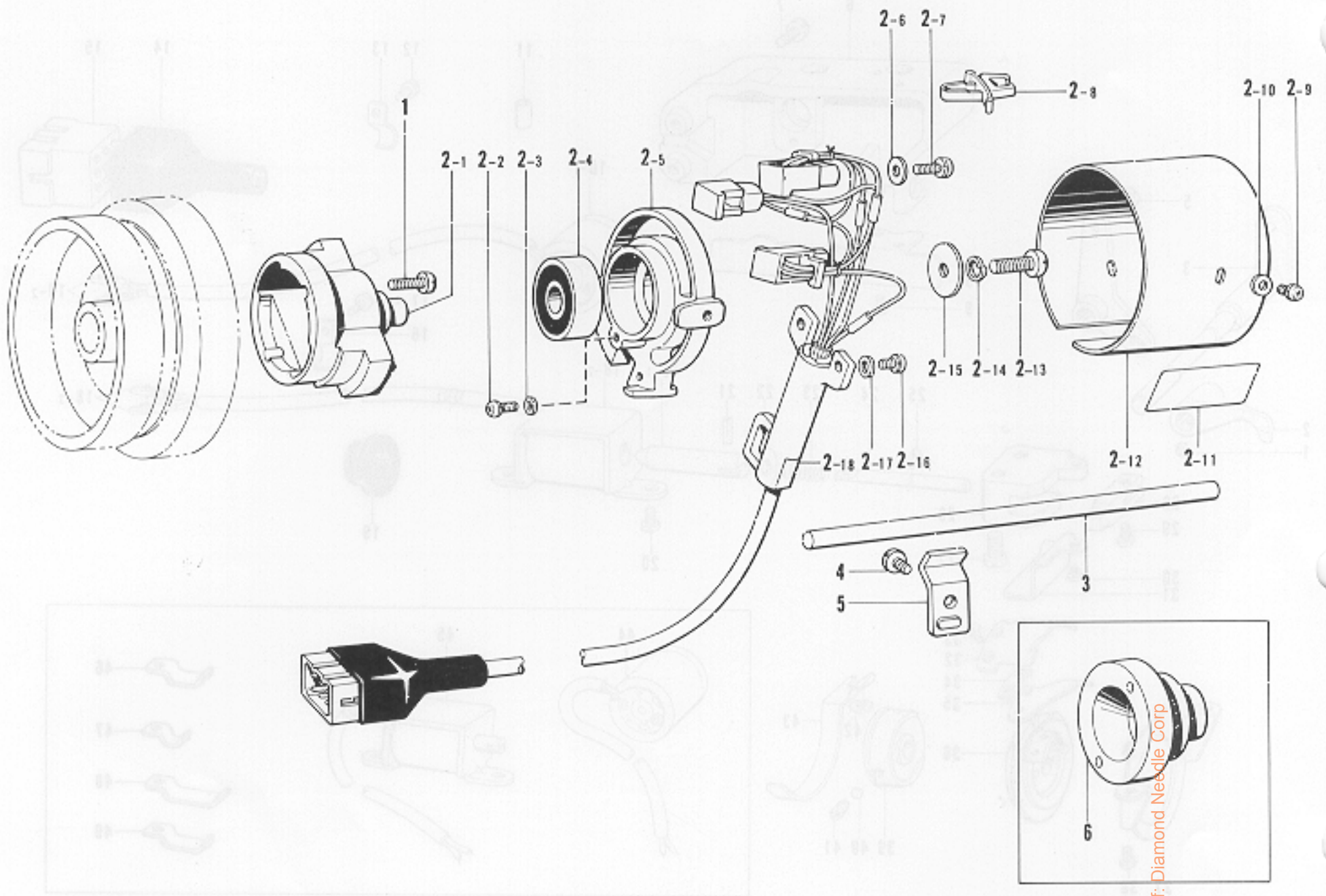
G. Thread Trimmer and Tension Releaser (-100, -200, -400, -500)



Ref. No.	Name of Parts	Q'ty	Parts No.	Assembly No.	Ref. No.	Name of Parts	Q'ty	Parts No.	Assembly No.
G-1	Screw	1	102716-0-03		G-23	Spring	1	145621-0-01	
G-2	Thread Release Lever	1	148327-0-01		G-24	Stud	1	145620-0-01	
G-3	Thread Release Stud	1	148339-0-01		G-25	Stop Ring	1	048030-3-42	
G-4	Thread Release Link	1	147106-0-01		G-26	Stopper Guide	1	145618-0-01	
G-5	Screw	1	120263-0-01		G-27	Screw	2	145619-0-01	
G-6	Solenoid Holder	1	147110-1-01		G-28	Stopper	1	145617-0-01	
G-7	Screw	2	009681-0-13		G-29	Screw	1	009660-7-12	
G-8	Solenoid Cover	1	148451-0-01		G-30	Screw	1	009679-3-12	
G-9	Screw	2			G-31	Oil Stopper Plate	1	145623-0-01	
G-10-1	Rotary Solenoid	1		G-10 Tension Release Solenoid Assembly	G-32	Movable Knife	1		
G-10-2	Terminal Pin	2	143549-0-00		G-33	Screw	2	141542-0-01	
G-11	Vinyl Tube	1	121823-0-01		G-34	Spacer	1		
G-12	Screw	2	009670-6-12		G-35	Lower Thread Finger	1	145610-1-01	
G-13	Supporter	2			G-36	Movable Knife Holder Assembly	1	145601-0-01	
G-14	Connector Cap	1			G-37	Holder Plate	1	145933-0-01	
G-15	Nylon Connector	1			G-38	Screw	2	009680-6-12	
G-16	Cord Holder	2	145595-0-01		G-39	Thread Trimming Clutch	1	149709-0-01	
G-17	Screw	2	009680-6-12		G-40	Washer	3	147697-0-01	
G-18-1	Plunger	1		G-18 Thread Trimming Solenoid Assembly	G-41	Screw	3	014680-6-22	
G-18-2	Solenoid Coil	1			G-42	Washer	1	025680-1-33	
G-18-3	Terminal Pin	2	143549-0-00		G-43	Movable Knife Cover	1	147946-0-01	
G-19	Bushing	1	146080-0-00		G-44	Rotary Solenoid	1		
G-20	Screw	2	009680-7-12		G-45	Thread Trimmer Solenoid	1		
G-21	Pin	1	047300-8-42		G-46	Tube Holder	2		
G-22	Washer	1	025040-3-35		G-47	Cord Holder	2		
					G-48	Cord Holder	1		
					G-49	Cord Holder	1		

From the library of Diamond Needle Corp

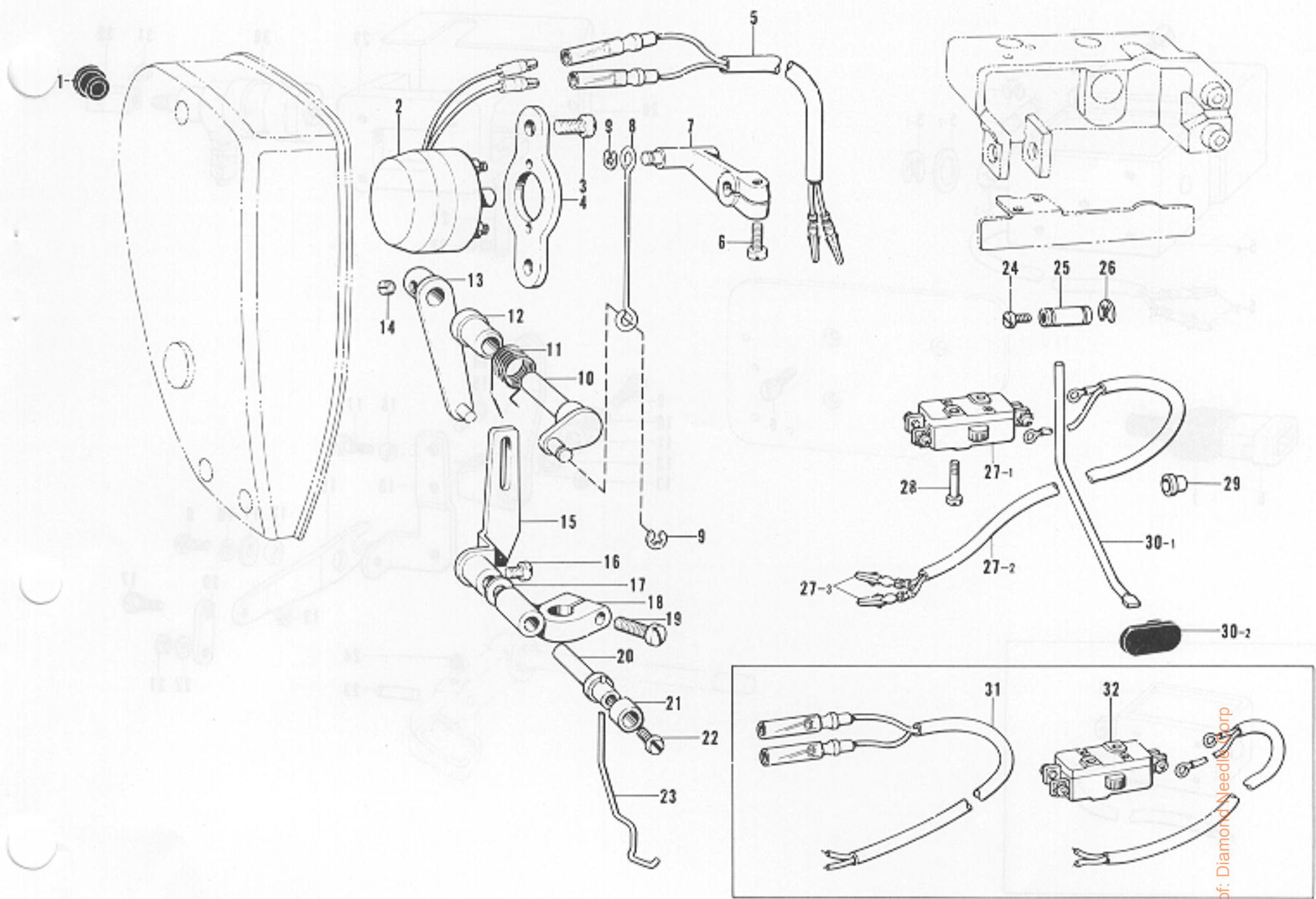
H. Synchronizer (-100, -200, -400, -500)



From the library of: Diamond Needle Corp

Ref. No.	Name of Parts	Q'ty	Parts No.	Assembly No	Ref. No.	Name of Parts	Q'ty	Parts No.	Assembly No.
H-1	Screw	2	009781-4-12	H-2 Synchronizer Assembly	H-2-12	Synchronizer Cover	1	218941-0-01	H-2 Synchronizer Assembly
H-2-1	Magnet Stud	1			H-2-13	Screw	1	216880-0-01	
H-2-2	Screw	1	215083-0-01		H-2-14	Spring Washer	1	028060-2-43	
H-2-3	Washer	1	025030-3-35		H-2-15	Washer	1	025060-3-35	
H-2-4	Bearing	1			H-2-16	Screw	2	215080-0-01	
H-2-5	Hole IC Holder	1			H-2-17	Washer	2	025040-1-35	
H-2-6	Washer	3	025040-3-35		H-2-18	Hole IC with Cord	1	218953-0-01	
H-2-7	Screw	3	217093-0-01		H-3	Synchronizer Holder Bar	1		
H-2-8	Cord Holder	1			H-4	Screw	2	009711-4-12	
H-2-9	Screw	2	215080-0-01		H-5	Holder	1		
H-2-10	Washer	2	025040-1-35		H-6	Slip Ring Support	1		
H-2-11	Label	1							

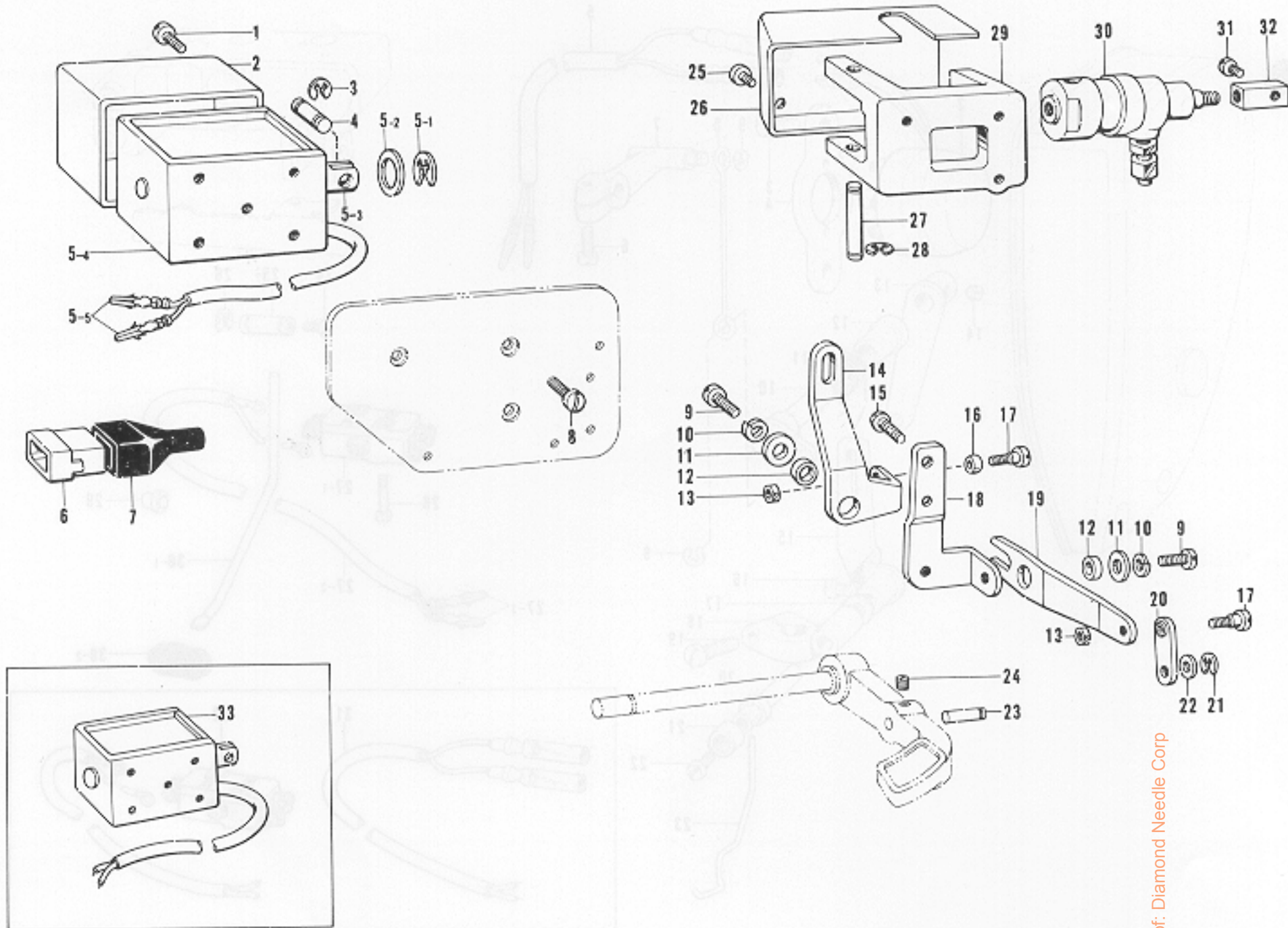
J. Thread Wiper and Reverse Switch Mechanism (-200, -400, -500)



Ref. No.	Name of Parts	Q'ty	Parts No.	Assembly No.	Ref. No.	Name of Parts	Q'ty	Parts No.	Assembly No.
J-1	Bushing	1	146080-0-00		J-20	Thread Wiper Stud	1	146092-0-01	
J-2	Thread Wiper Solenoid	1	146082-0-00		J-21	Thread Wiper Stud Collar	1	146288-0-01	
J-3	Screw	2	009680-8-12		J-22	Screw	1	001670-5-14	
J-4	Solenoid Set Plate	1	146081-0-01		J-23	Thread Wiper	1	146094-0-01	
J-5	Cord	1			J-24	Screw	1	009681-4-14	
J-6	Screw	1	009671-0-13		J-25	Actuator Pin	1	146125-0-01	
J-7	Solenoid Link	1	146086-0-01		J-26	Stop Ring	2	048080-3-42	
J-8	Wire Link	1	146087-0-01		J-27-1	Micro Switch	1	140643-0-00	J-27 Switch
J-9	Stop Ring	2	048025-3-42		J-27-2	Cord	1	146122-0-00	
J-10	Thread Wiper Crank	1	146088-0-01		J-27-3	Terminal Pin	2	143549-0-00	
J-11	Spring	1	146089-0-01		J-28	Screw	2	146124-0-01	
J-12	Bushing	1	146079-0-01		J-29	Bushing	1	146080-0-00	
J-13	Thread Wiper Lever	1	146090-0-01		J-30-1	Actuator Bar	1	148461-0-01	J-30 Actuator Assembly 148460-0-01
J-14	Screw	2	102716-0-02		J-30-2	Actuator	1	146128-0-00	
J-15	Grooved Link	1	146091-0-01		J-31	Cord	1		
J-16	Screw	1	111443-0-01		J-32	Switch	1		
J-17	Washer	1	102707-0-02						
J-18	Thread Wiper Supporter	1	146095-0-01						
J-19	Screw	1	009681-4-14						

★Parts J-1~J-23 are for -200 · -400 and -500 type specification, and Parts J-24~J-30 are for -400 and -500 one.

K. Reverse Mechanism (-400, -500)



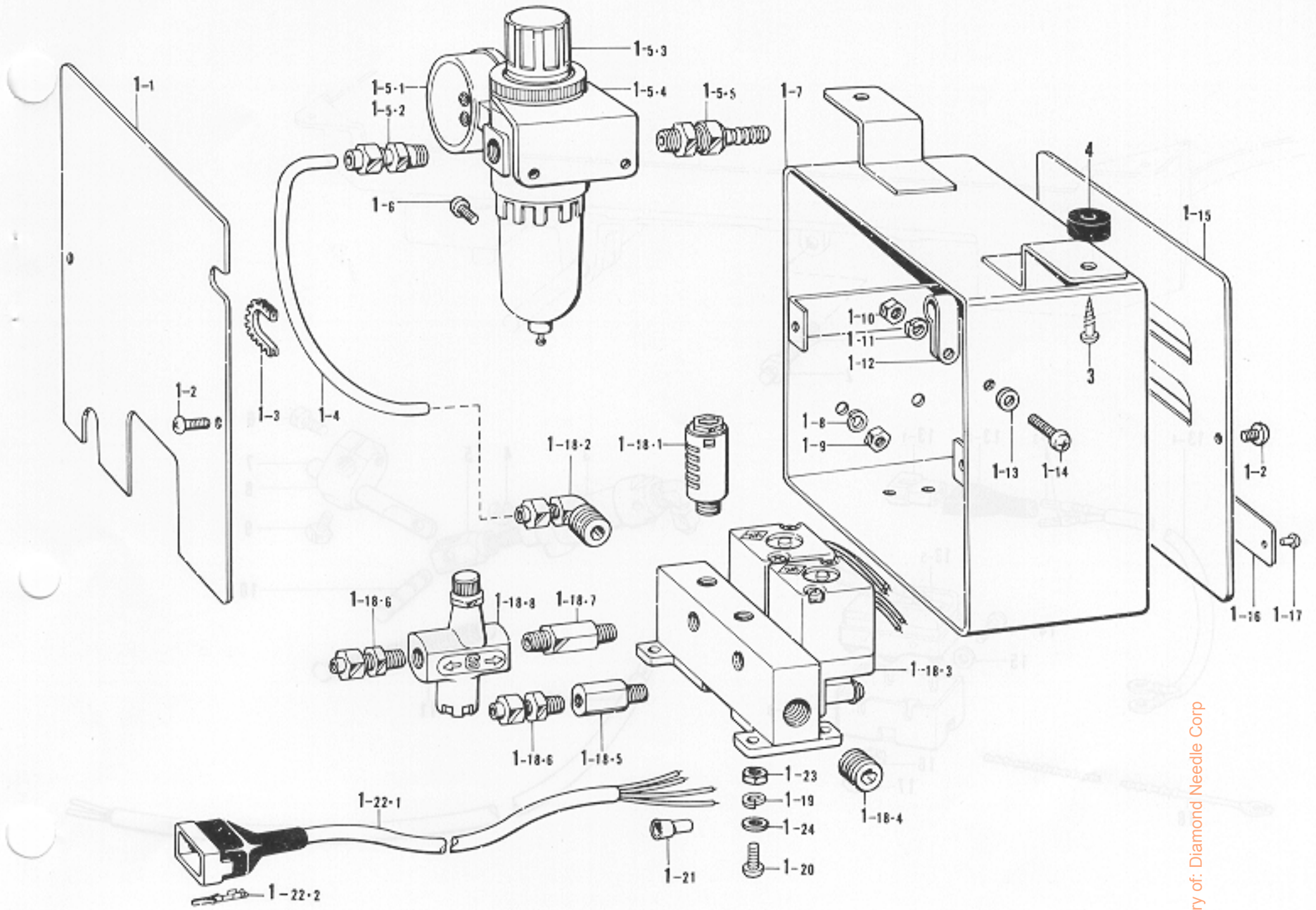
From the library of: Diamond Needle Corp

Ref. No.	Name of Parts	Q'ty	Parts No.	Assembly No.	Ref. No.	Name of Parts	Q'ty	Parts No.	Assembly No.
K-1	Screw	1	007501-2-02		K-16	Rushing	1	141331-0-01	
K-2	Solenoid Cover	1	148465-0-00		K-17	Screw	2	141494-0-01	
K-3	Stop Ring	2	048040-3-42		K-18	Solenoid Lever Bracket	1	148454-0-01	
K-4	Pin	1	147754-0-01		K-19	Reverse Link	1	148455-0-01	
K-5-1	Stop Ring	1	146103-0-01	K-5 Reverse Solenoid Assembly	K-20	Connecting Link	1	148467-0-01	
K-5-2	Rubber Stopper	1	146104-0-00		K-21	Stop Ring	1	048040-3-42	
K-5-3	Plunger	1			K-22	Washer	1	146115-0-00	
K-5-4	Solenoid	1			K-23	Pin	1	146114-0-01	
K-5-5	Terminal Pin	2	143549-0-00		K-24	Screw	1	013679-4-12	
K-6	6P Connector	1		K-25	Screw	2	009670-5-13		
K-7	Connector Cap	1		K-26	Cover	1	146156-0-01		
K-8	Screw	3	007500-8-12	K-27	Cylinder Supporter Shaft	1	146148-0-01		
K-9	Screw	2	009761-4-12	K-28	Stop Ring	2	048040-3-42		
K-10	Washer	2	028060-2-42	K-29	Cylinder Holder	1	148853-0-01		
K-11	Washer	2	141343-0-02	K-30	Reverse Cylinder	1	146149-0-01		
K-12	Collar	2	148456-0-01	K-31	Screw	1	141598-0-01		
K-13	Nut	2	150553-0-01	K-32	Piston Rod Connector	1	148854-0-01		
K-14	Solenoid Lever	1	148453-0-01	K-33	Reverse Solenoid	1			
K-15	Bolt	2	146360-0-02						

★Parts K-1~K-24 are for -400 type specification, and Parts K-8~K-32 are for -500 one.

L. Control Box Mechanism (-500)

(00) Presser Lifter Mechanism (-500)

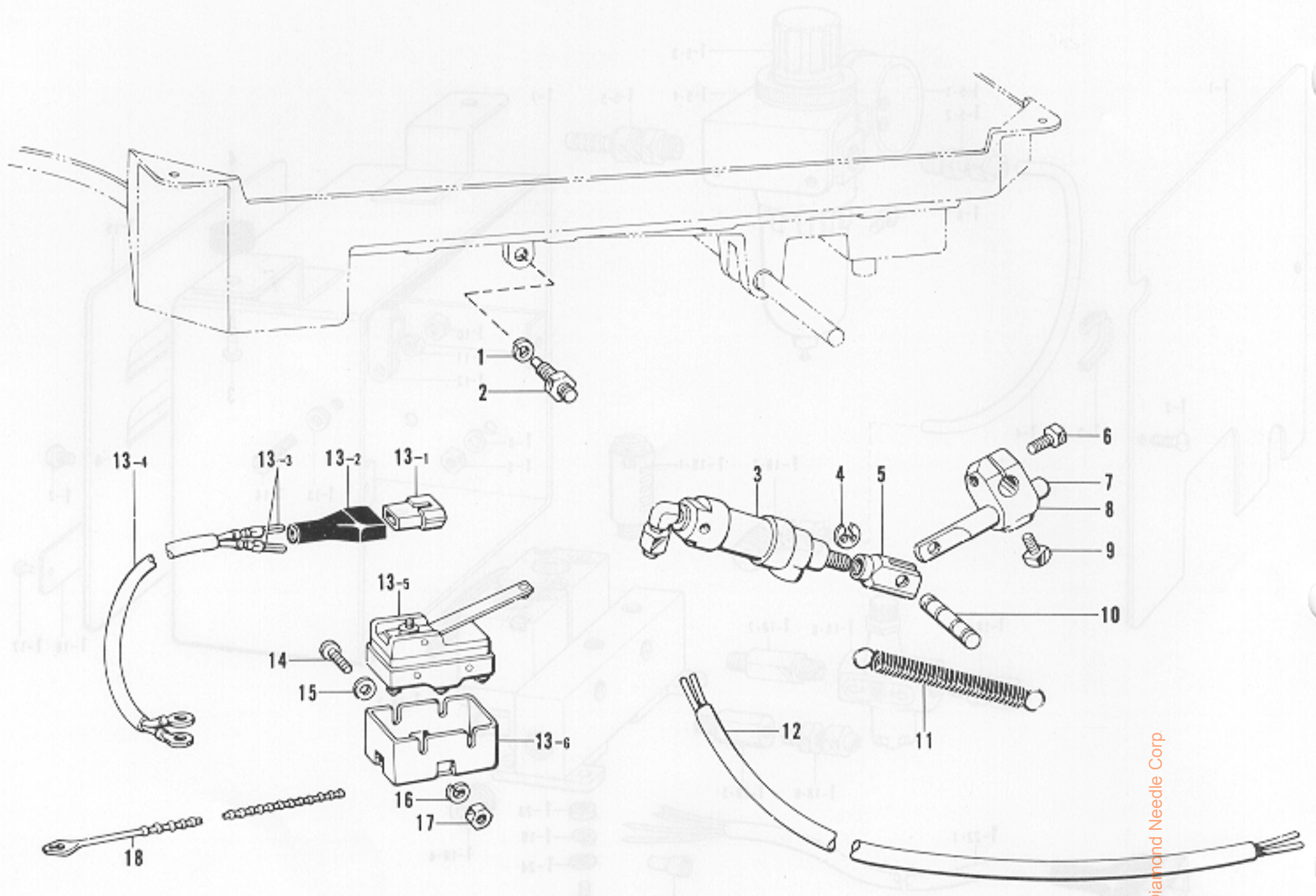


From the library of: Diamond Needle Corp

Ref. No.	Name of Parts	Q'ty	Parts No.	Assembly No.	Ref. No.	Name of Parts	Q'ty	Parts No.	Assembly No.
L-1-1	Rear Cover	1			L-1-16	Name Plate	1		
L-1-2	Screw	4	008400-5-64		L-1-17	Rivet	1		
L-1-3	Nylon Bushing	1	146171-0-00		L-1-18-1	Silencer	2	140682-0-01	L-1-18 Solenoid Valve Assembly 149543-0-01
L-1-4	Air Tube	1	140540-0-00		L-1-18-2	1/4" Elbow	1	140538-0-00	
L-1-5-1	Presser Gauge	1		L-1-5 Air Filter Unit 143959-1-03	L-1-18-3	Solenoid Valve	1	149544-0-01	
L-1-5-2	1/4" Connector Assembly	1	142349-0-00		L-1-18-4	1/4" Cap	1	140542-0-01	
L-1-5-3	Valve	1	143960-1-01		L-1-18-5	Valve Connector	1	140539-0-00	
L-1-5-4	Air Unit Holder Plate	1			L-1-18-6	1/8" Connector	2	140543-0-00	
L-1-5-5	Air Tube Connector	1	140678-0-00		L-1-18-7	Speed Control Connector	1	142037-0-00	
L-1-6	Screw	2	002501-0-64		L-1-18-8	Speed Controller	1	142038-0-01	
L-1-7	Air Control Box	1		L-1 Air Control Box Assembly 149539-0-01	L-1-19	Washer	4	028040-2-43	L-1 Air Control Box Assembly 149539-0-01
L-1-8	Washer	2	028050-2-43		L-1-20	Screw	4	002401-2-03	
L-1-9	Nut	2	021500-1-63		L-1-21	Connector	4	206755-0-00	
L-1-10	Nut	1	021300-1-03		L-1-22	Valve Cord	1	149545-0-01	
L-1-11	Washer	1	028030-2-43		L-1-23	Nut	4	021400-1-03	
L-1-12	Cord Holder	1	149547-0-00		L-1-24	Washer	4	025040-1-33	
L-1-13	Washer	1	025030-1-33		L-3	Screw	2	031483-2-03	
L-1-14	Screw	1	002301-0-03		L-4	Rubber Cushion	2	115018-0-01	
L-1-15	Front Cover	1							

M. Presser Lifter Mechanism (-500)

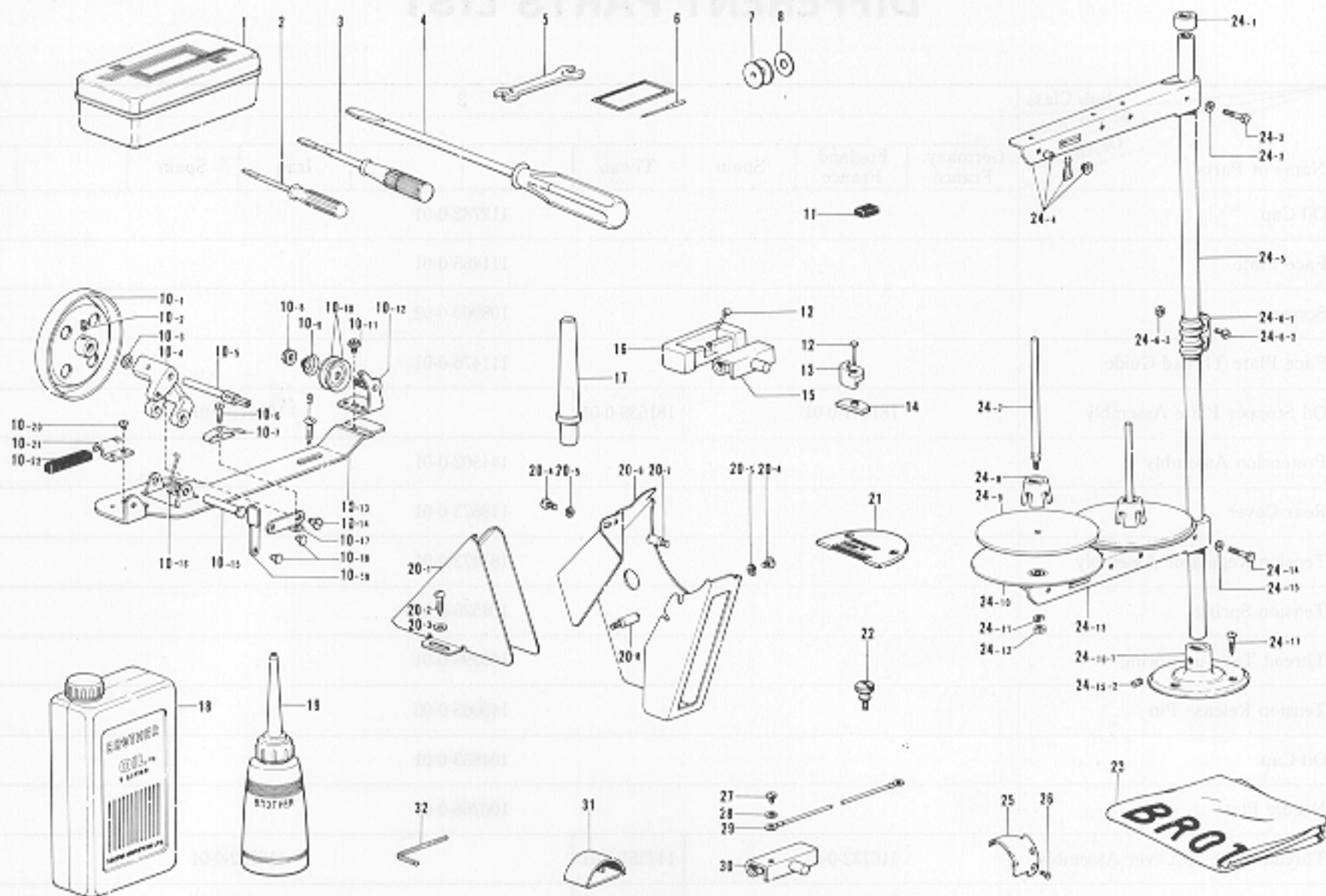
Control Box Mechanism (-500)



From the library of: Diamond Needle Corp

Ref. No.	Name of Parts	Q'ty	Parts No.	Assembly No.	Ref. No.	Name of Parts	Q'ty	Parts No.	Assembly No.
M-1	Washer	2	028060-2-40		M-12	Air Tube	1	149548-0-01	
M-2	Screw	2	147141-0-01		M-13-1	Nylon Connector	1	143488-0-01	M-13 Presser Foot Lifter Cord Assembly 146160-0-01
M-3	Presser Foot Cylinder	1	146157-0-01		M-13-2	Connector Cap	1	143489-0-01	
M-4	Stop Ring	2	048040-3-42		M-13-3	Terminal Pin	2	143549-0-00	
M-5	Piston Rod Joint	1	140627-0-01		M-13-4	Presser Foot Lifter Cord	1	146161-0-00	
M-6	Bolt	1	017762-0-13		M-13-5	Micro Switch	1	140948-0-01	
M-7	Piston Drive Link	1	140668-0-01		M-13-6	Cover	1	140950-0-00	
M-8	Knee Lifter Joint	1	146039-0-01		M-14	Screw	2	002303-0-06	
M-9	Bolt	1	100463-0-01		M-15	Washer	2	025030-2-33	
M-10	Pin	1	146986-0-01		M-16	Washer	2	028030-2-43	
M-11	Spring	2	146985-0-01		M-17	Nut	2	021300-1-03	
					M-18	Bead Band	1	144189-0-01	

Z. Accessories



Ref. No.	Name of Parts	Q'ty	Parts No.	Assembly No.	Ref. No.	Name of Parts	Q'ty	Parts No.	Assembly No.
Z- 1	Accessory Box		110436-0-01		Z-18	Oil Tank		145277-1-03	
Z- 2	Screw Driver		142443-0-01		Z-19	Oiler		114483-0-01	
Z- 3	Screw Driver		118837-0-01		Z-20- 1	Belt Cover D			Z-20 Belt Cover Assembly
Z- 4	Screw Driver		101572-1-01		Z-20- 2	Screw		100666-0-02	
Z- 5	Spanner		100887-0-01		Z-20- 3	Washer		025750-1-32	
Z- 6	Needle				Z-20- 4	Screw		009680-8-12	
Z- 7	Bobbin		146290-0-01		Z-20- 5	Washer		028680-2-42	
Z- 8	Bobbin Case Sheet				Z-20- 6	Belt Cover UA			
Z- 9	Screw		100666-0-02		Z-20- 7	Stud		147856-0-01	
Z-10- 1	Bobbin Winder Wheel Assembly			Z-10 Bobbin Winder Assembly 117963-0-01	Z-20- 8	Stud		147855-0-01	
Z-10- 2	Screw		100366-0-02		Z-21	Needle Plate			
Z-10- 3	Washer				Z-22	Screw			
Z-10- 4	Bobbin Winder Wheel Shatt Bushing				Z-23	Head Cover		144222-0-01	
Z-10- 5	Bobbin Winder Shaft		117970-0-01		Z-24- 1	Cap			Z-24-6 Joint Assembly 150105-0-01
Z-10- 6	Screw		100657-0-01		Z-24- 2	Bolt		017502-8-03	
Z-10- 7	Bobbin Presser				Z-24- 3	Washer		025050-2-33	
Z-10- 8	Nut				Z-24- 4	Thread Hanger Assembly		150192-0-01	
Z-10- 9	Spring		100401-0-01		Z-24- 5	Pipe		150172-0-01	
Z-10-10	Tension Disc		145446-0-01		Z-24- 6-1	Joint		150173-0-01	
Z-10-11	Screw				Z-24- 6-2	Screw		150202-0-01	
Z-10-12	Bobbin Winder Wheel Guide Bracket Assembly				Z-24- 6-3	Nut		021500-1-03	
Z-10-13	Bobbin Winder Wheel Bracket				Z-24- 7	Spool Shaft		150179-0-01	Z-24 Cotton Stand Assembly
Z-10-14	Screw		100659-0-01		Z-24- 8	Spool Cushion		147060-0-01	
Z-10-15	Pin				Z-24- 9	Spool Mat		150182-0-00	
Z-10-16	Spring		117969-0-01		Z-24-10	Spool Stand Base		150180-0-00	
Z-10-17	Bobbin Presser Arm				Z-24-11	Spring Washer		028050-2-43	
Z-10-18	Pin		100661-0-01		Z-24-12	Nut		021500-1-03	
Z-10-19	Bobbin Presser Arm Bracket				Z-24-13	Spool Holder Assembly		150177-0-01	Z-24-16 Cotton Stand Base Assembly 150139-0-01
Z-10-20	Screw		009679-3-12		Z-24-14	Bolt		017502-8-03	
Z-10-21	Bobbin Winder Wheel Stopper Holder				Z-24-15	Washer		025050-2-33	
Z-10-22	Bobbin Winder Wheel Stopper		100662-0-01		Z-24-16-1	Cotton Stand Base		150189-0-01	
Z-11	Magnet		112525-0-00	Z-24-16-2	Screw		150181-0-01		
Z-12	Nail		109714-0-00	Z-24-17	Screw		031452-2-03		
Z-13	Head Cushion		146003-1-01	Z-25	Movable Knife				
Z-14	Oil Pan Cushion		146004-0-01	Z-26	Screw		141542-0-01		
Z-15	Hinge		143882-0-01	Z-27	Screw		009680-6-13		
Z-16	Blower		143910-0-01	Z-28	Washer		025680-2-34		
Z-17	Head Rest		100477-0-01	Z-29	Earth Wire		145946-0-01		
				Z-30	Head Hinge		145945-0-01		
				Z-31	Movable Knife Case		145990-0-01		
				Z-32	Spanner		146049-0-01		

* The details of included accessories are subject to change.

* Änderungen in der Aufstellung der mitgelieferten Zubehöre sind vorbehalten.

* Les détails des accessoires inclus sont sujets à des changements.

* Los detalles de los accesorios incluidos pueden variar.

DIFFERENT PARTS LIST

-3

Ref. No.	Name of Parts	Sub Class		3						
		Motor Spec.	Destination	Germany, France	England, France	Spain	Tiwan		Iraq	Spain
A- 2	Oil Cap									112782-0-01
A- 4	Face Plate									111455-0-01
A- 6	Screw									108960-0-02
A- 7	Face Plate Thread Guide									111476-0-01
A- 8	Oil Stopper Plate Assembly			181641-0-01			181639-0-01			181641-0-01
A-20	Pretension Assembly									144502-0-01
A-21	Rear Cover									118673-0-01
A-32	Tension Regulator Assembly									181473-0-01
A-32-2	Tension Spring									104525-0-01
A-32-6	Thread Take-up Spring									100399-0-01
A-33	Tension Release Pin									146065-0-00
A-37	Oil Cap									104833-0-01
A-40	Needle Plate									100266-0-01
B- 4	Thread Take-up Lever Assembly			116732-0-01			147551-0-01			116732-0-01
B- 4-3	Needle Roller Bearing			116735-0-00			147777-0-00			116735-0-00
B- 4-5	Cap									145600-0-00
B- 4-9	Needle Bar Connector			140353-0-01			145466-0-01			140353-0-01
B-12	Needle Bar	145268-0-01								111462-0-01
B-14	Needle Bar Bushing Lower	142116-0-01								117243-0-01
B-16	Needle Bar Thread Guide									112775-0-01
B-18	Needle	107415-0-14								100265-0-34
B-22	Thread Take-up Crank			142782-0-00			148965-0-00			142782-0-00
B-45	Pulley									115244-0-01
C- 5	Feed Dog									100334-0-01
C-18	Lower Shaft									109160-0-01
C-19	Felt									106436-0-01
C-22	Screw									107407-0-03
C-23	Bobbin Case Assembly									100369-0-01
C-24	Bobbin Case Sheet									140356-0-01
C-26	Rotary Hook Assembly									116780-0-01
C-27	Oil Stopper Assembly									144943-0-01
C-47	Bobbin Presser Spring									
D- 4	Eccentric Wheel									180792-0-01
D-11	Spring									118753-0-01
D-15	Reverse Lever Assembly									181678-0-01
D-15-4	Reverse Lever									118752-0-01
E-12	Presser Foot									113280-0-01
E-13	Hinge Screw									109163-0-01
E-14	Tension Release Lever									111470-0-00
E-15	Tension Release Lever Spring									100405-0-01

From the library of: Diamond Needle Corp

Ref. No.	Name of Parts	Sub Class Motor Spec. Destination	3												
			Germany, France	England, France	Spain	Tiwan			Iraq	Spain					
E-24	Washer	025350-1-34													
E-25	Finger Guard	150384-0-01													
F-25	Oil Pan Assembly									181420-2-01					
F-25-1	Oil Pan									149580-0-01					
F-25-3	Knee Lifter Shaft									146036-1-01					
F-25-8	Spring									146038-0-01					
G-9	Screw														
G-10	Tension Release Solenoid Assembly														
G-13	Supporter														
G-14	Connector Cap														
G-15	Nylon Connector														
8	Thread Trimming Solenoid Assembly														
G-32	Movable Knife														
G-34	Spacer														
G-44	Rotary Solenoid														
G-45	Thread Trimming Solenoid														
G-46	Tube Holder														
47	Cord Holder														
G-48	Cord Holder														
G-49	Cord Holder														
H-2	Synchronizer Assembly														
H-3	Synchronizer Holder Bar														
H-5	Holder														
H-6	Slip Ring Support														
J-5	Cord														
7	Switch														
J-31	Cord														
J-32	Switch														
K-5	Reverse Solenoid Assembly														
K-6	6P Connector														
K-7	Connector Cap														
K-33	Reverse Solenoid														
Z-5	Needle	107415-0-14								100265-0-34					
Z-8	Bobbin Case Sheet									140356-0-01					
Z-20	Belt Cover Assembly		147895-0-11									147895-0-11			
21	Needle Plate									100267-0-01					
Z-22	Screw									106120-0-03					
Z-24	Cotton Stand Assembly		150150-0-01								150150-0-01				150150-0-01
Z-25	Movable Knife														

From the library of: Diamond Needle Corp

Ref. No.	Name of Parts	Sub Class		Motor Spec.		Destination		5	
		France	France			Spain	Spain		
A- 2	Oil Cap								112782-0-01
A- 4	Face Plate								111455-0-01
A- 6	Screw								108960-0-02
A- 7	Face Plate Thread Guide								111476-0-01
A- 8	Oil Stopper Plate Assembly								181641-0-01
A-20	Pretension Assembly								144502-0-01
A-21	Rear Cover								118673-0-01
A-32	Tension Regulator Assembly								181473-0-01
A-32-2	Tension Spring								104525-0-01
A-32-6	Thread Take-up Spring								100399-0-01
A-33	Tension Release Pin								146065-0-00
A-37	Oil Cap								104833-0-01
A-40	Needle Plate								100267-0-01
B- 4	Thread Take-up Lever Assembly								116732-0-01
B- 4-3	Needle Roller Bearing								116735-0-00
B- 4-5	Cap								145600-0-00
B- 4-9	Needle Bar Connector								140353-0-01
B-12	Needle Bar								145258-0-01
B-14	Needle Bar Bushing Lower								142116-0-01
B-16	Needle Bar Thread Guide								112775-0-01
B-18	Needle	107415-0-18							100265-0-41
B-22	Thread Take-up Crank								111465-0-00
B-45	Pulley								115244-0-01
C- 5	Feed Dog								100334-0-01
C-18	Lower Shaft								109160-0-01
C-19	Felt								106436-0-01
C-22	Screw								107407-0-03
C-23	Bobbin Case Assembly								100369-0-01
C-24	Bobbin Case Sheet								140356-0-01
C-26	Rotary Hook Assembly								116780-0-01
C-27	Oil Stopper Assembly								144943-0-01
C-47	Bobbin Presser Spring								
D- 4	Eccentric Wheel								145269-0-01
D-11	Spring								145643-0-01
D-15	Reverse Lever Assembly								181678-0-01
D-15-4	Reverse Lever								118752-0-01
E-12	Presser Foot								113280-0-01
E-13	Hinge Screw								109163-0-01
E-14	Tension Release Lever								111470-0-00
E-15	Tension Release Lever Spring								100405-0-01

From the library of: Diamond Needle Corp

Ref. No.	Name of Parts	Sub Class		Motor Spec.		Destination		5	
		France	France			Spain	Spain		
E-24	Washer	025350-1-34							
E-25	Finger Guard	150384-0-01							
F-25	Oil Pan Assembly			181420-2-01					
F-25-1	Oil Pan			149580-0-01					
F-25-3	Knee Lifter Shaft			146036-1-01					
F-25-8	Spring			146038-0-01					
G-9	Screw								
G-10	Tension Release Solenoid Assembly								
G-13	Supporter								
G-14	Connector Cap								
G-15	Nylon Connector								
G-18	Thread Trimming Solenoid Assembly								
G-32	Movable Knife								
G-34	Spacer								
G-44	Rotary Solenoid								
G-45	Thread Trimming Solenoid								
G-46	Tube Holder								
G-47	Cord Holder								
G-48	Cord Holder								
G-49	Cord Holder								
H-2	Synchronizer Assembly								
H-3	Synchronizer Holder Bar								
H-5	Holder								
H-6	Slip Ring Support								
J-5	Cord								
J-7	Switch								
J-31	Cord								
J-32	Switch								
K-5	Reverse Solenoid Assembly								
K-6	6P Connector								
K-7	Connector Cap								
K-33	Reverse Solenoid								
Z-6	Needle	107415-0-18				100265-0-41			
Z-8	Bobbin Case Sheet					140356-0-01			
Z-20	Belt Cover Assembly	147895-0-11						147895-0-11	
Z-21	Needle Plate					100267-0-01			
Z-22	Screw					106120-0-03			
Z-24	Cotton Stand Assembly		150150-0-01			150150-0-01			150150-0-01
Z-25	Movable Knife								

From the library of: Diamond Needle Corp

Ref. No.	Name of Parts	Sub Class		103			105			
		Motor Spec.	Destination	Brother		Efka		Brother		Efka
							Germany, France			
A- 2	Oil Cap				112782-0-01				112782-0-01	
A- 4	Face Plate				111455-0-01				111455-0-01	
A- 6	Screw									
A- 7	Face Plate Thread Guide									
A- 8	Oil Stopper Plate Assembly				181641-0-01				181641-0-01	
A-20	Pretension Assembly									
A-21	Rear Cover				118673-0-01				118673-0-01	
A-32	Tension Regulator Assembly				181473-0-01				181635-0-01	
A-32-2	Tension Spring				104525-0-01				145153-0-01	
A-32-6	Thread Take-up Spring				100399-0-01				145519-0-01	
A-33	Tension Release Pin				146065-0-00				146065-0-00	
A-37	Oil Cap				142274-0-01				142274-0-01	
A-40	Needle Plate				145971-0-01				147245-0-01	
B- 4	Thread Take-up Lever Assembly				116732-0-01				116732-0-01	
B- 4-3	Needle Roller Bearing				116735-0-00				116735-0-00	
B- 4-5	Cap				145600-0-00				145600-0-00	
B- 4-9	Needle Bar Connector				140353-0-01				140353-0-01	
B-12	Needle Bar				145467-0-01		147518-0-01		145986-0-01	
B-14	Needle Bar Bushing Lower				117243-0-01				142116-0-01	
B-16	Needle Bar Thread Guide				145944-0-01				145944-0-01	
B-18	Needle				100265-0-34		107415-0-14		100255-0-42	
B-22	Thread Take-up Crank				142782-0-00				111465-0-00	
B-45	Pulley				148823-0-01				148823-0-01	
C- 5	Feed Dog				100334-0-01				144500-0-01	
C-18	Lower Shaft				145517-0-01				145517-0-01	
C-19	Felt				145751-0-01				145751-0-01	
C-22	Screw				009681-0-12				009681-0-12	
C-23	Bobbin Case Assembly				148350-1-01				148350-1-01	
C-24	Bobbin Case Sheet									
C-26	Rotary Hook Assembly				145585-1-01				145585-1-01	
C-27	Oil Stopper Assembly									
C-47	Bobbin Presser Spring				148967-1-01				148967-1-01	
D- 4	Eccentric Wheel				186792-0-01				145269-0-01	
D-11	Spring				118753-0-01				145643-0-01	
D-15	Reverse Lever Assembly				181678-0-01				181678-0-01	
D-15-4	Reverse Lever				118752-0-01				118752-0-01	
E-12	Presser Foot				140957-0-01				145157-0-01	
E-13	Hinge Screw				109163-0-01				109163-0-01	
E-14	Tension Release Lever				111470-0-00				111470-0-00	
E-15	Tension Release Lever Spring				100405-0-01				100405-0-01	

Ref. No.	Name of Parts	Sub Class		103			105			
		Motor Spec.	Destination	Brother		Efka		Brother		Efka
							Germany, France			
E-24	Washer						025350-1-34			
E-25	Finger Guard						150384-0-01			
F-25	Oil Pan Assembly			181420-2-01			181420-2-01			
F-25-1	Oil Pan			149580-0-01			149580-0-01			
F-25-3	Knee Lifter Shaft			146036-1-01			146036-1-01			
F-25-8	Spring			146038-0-01			146038-0-01			
G-9	Screw			001639-3-12			001639-3-12			
G-10	Tension Release Solenoid Assembly			147107-0-01			147107-0-01			
G-13	Supporter			140647-0-01			140647-0-01			
G-14	Connector Cap			145596-0-01			145596-0-01			
G-15	Nylon Connector			145681-0-00			145681-0-00			
18	Thread Trimming Solenoid Assembly			146014-0-01			146014-0-01			
G-32	Movable Knife			145608-0-01			146187-0-00			
G-34	Spacer			145611-0-00			145610-1-01			
G-44	Rotary Solenoid					148852-0-01			148852-0-01	
G-45	Thread Trimming Solenoid					146910-0-01			146910-0-01	
G-46	Tube Holder									
G-47	Cord Holder									
G-48	Cord Holder									
G-49	Cord Holder									
H-2	Synchronizer Assembly			218931-0-01			218931-0-01			
H-3	Synchronizer Holder Bar					218944-0-01			218944-0-01	
H-5	Holder					216332-0-01			216332-0-01	
H-6	Slip Ring Support					148825-0-01			148825-0-01	
J-5	Cord									
27	Switch									
J-31	Cord									
J-32	Switch									
K-5	Reverse Solenoid Assembly									
K-6	6P Connector									
K-7	Connector Cap									
K-33	Reverse Solenoid									
Z-6	Needle			100265-0-34			107415-0-14		100265-0-42	
Z-8	Bobbin Case Sheet									
Z-20	Belt Cover Assembly			147895-0-11			147895-0-11			
21	Needle Plate			100266-0-01			100266-0-01			
Z-22	Screw									
Z-24	Cotton Stand Assembly			150150-0-01			150150-0-01		150150-0-01	
Z-25	Movable Knife			145608-0-01			147981-0-01			

Ref. No.	Name of Parts	203		205	
		Sub Class		Sub Class	
		Brother	Efka	Brother	Efka
A- 2	Oil Cap		104449-0-01		104449-0-01
A- 4	Face Plate		148330-0-01		148330-0-01
A- 6	Screw				
A- 7	Face Plate Thread Guide				
A- 8	Oil Stopper Plate Assembly		181641-0-01		181641-0-01
A-20	Pretension Assembly				
A-21	Rear Cover		118673-0-01		118673-0-01
A-32	Tension Regulator Assembly		181473-0-01		181635-0-01
A-32-2	Tension Spring		104525-0-01		145153-0-01
A-32-6	Thread Take-up Spring		100399-0-01		145519-0-01
A-33	Tension Release Pin		146065-0-00		146065-0-00
A-37	Oil Cap		142274-0-01		142274-0-01
A-40	Needle Plate		145971-0-01		147245-0-01
B- 4	Thread Take-up Lever Assembly		116732-0-01		116732-0-01
B- 4-3	Needle Roller Bearing		116735-0-00		116735-0-00
B- 4-5	Cap		145600-0-00		145600-0-00
B- 4-9	Needle Bar Connector		140353-0-01		140353-0-01
B-12	Needle Bar		145467-0-01		145986-0-01
B-14	Needle Bar Bushing Lower		117243-0-01		142116-0-01
B-16	Needle Bar Thread Guide		145944-0-01		145944-0-01
B-18	Needle		100265-0-34		100265-0-42
B-22	Thread Take-up Crank		142782-0-00		111465-0-00
B-45	Pulley		148823-0-01		148823-0-01
C- 5	Feed Dog		100334-0-01		144500-0-01
C-18	Lower Shaft		145517-0-01		145517-0-01
C-19	Felt		145751-0-01		145751-0-01
C-22	Screw		009681-0-12		009681-0-12
C-23	Bobbin Case Assembly		148350-1-01		148350-1-01
C-24	Bobbin Case Sheet				
C-26	Rotary Hook Assembly		145585-1-01		145585-1-01
C-27	Oil Stopper Assembly				
C-47	Bobbin Presser Spring		148967-1-01		148967-1-01
D- 4	Eccentric Wheel		180792-0-01		145269-0-01
D-11	Spring		118753-0-01		145643-0-01
D-15	Reverse Lever Assembly		181578-0-01		181678-0-01
D-15-4	Reverse Lever		118752-0-01		118752-0-01
E-12	Presser Foot		140957-0-01		145157-0-01
E-13	Hinge Screw		109163-0-01		109163-0-01
E-14	Tension Release Lever		111470-0-00		111470-0-00
E-15	Tension Release Lever Spring		100405-0-01		100405-0-01

From the library of: Diamond Needle Corp

Ref. No.	Sub Class Motor Spec. Destination	203		205	
		Brother	Efka	Brother	Efka
Name of Parts					
E-24	Washer				
E-25	Finger Guard				
F-25	Oil Pan Assembly	181420-2-01		181420-2-01	
F-25-1	Oil Pan	149580-0-01		149580-0-01	
F-25-3	Knee Lifter Shaft	146036-1-01		146036-1-01	
F-25-8	Spring	146038-0-01		146038-0-01	
G-9	Screw	001639-3-12		001639-3-12	
G-10	Tension Release Solenoid Assembly	147107-0-01		147107-0-01	
G-13	Supporter				
G-14	Connector Cap	146119-0-00		146119-0-00	
G-15	Nylon Connector	145681-0-00		145681-0-00	
18	Thread Trimming Solenoid Assembly	146014-0-01		146014-0-01	
G-32	Movable Knife	145608-0-01		147981-0-01	
G-34	Spacer	145611-0-00		146187-0-00	
G-44	Rotary Solenoid		148852-0-01		148852-0-01
G-45	Thread Trimming Solenoid		146910-0-01		146910-0-01
G-46	Tube Holder	142268-0-01		142268-0-01	
G-47	Cord Holder				
G-48	Cord Holder				
G-49	Cord Holder				
H-2	Synchronizer Assembly	218931-0-01		218931-0-01	
H-3	Synchronizer Holder Bar		218944-0-01		218944-0-01
H-5	Holder		216332-0-01		216332-0-01
H-6	Slip Ring Support		148825-0-01		148825-0-01
I-5	Cord	146095-0-00		146095-0-00	
I-27	Switch				
J-31	Cord		146912-0-00		146912-0-00
J-32	Switch				
K-5	Reverse Solenoid Assembly				
K-6	6P Connector				
K-7	Connector Cap				
K-33	Reverse Solenoid				
Z-6	Needle	100265-0-34		100265-0-42	
Z-8	Bobbin Case Sheet				
Z-20	Belt Cover Assembly	147895-0-11		147895-0-11	
Z-21	Needle Plate	100266-0-01		100266-0-01	
Z-22	Screw				
Z-34	Cotton Stand Assembly	150150-0-01		150150-0-01	
Z-25	Movable Knife	145608-0-01		147981-0-01	

From the library of: Diamond Needle Corp.

Ref. Npo.	Name of Parts	403		405	
		Brother	Efka	Brother	Efka
		U.S.A., Canada			
A- 2	Oil Cap	104449-0-01		104449-0-01	
A- 4	Face Plate	148330-0-01		148330-0-01	
A- 6	Screw				
A- 7	Face Plate Thread Guide				
A- 8	Oil Stopper Plate Assembly	181641-0-01		181641-0-01	
A-20	Pretension Assembly				
A-21	Rear Cover	148452-0-01		148452-0-01	
A-32	Tension Regulator Assembly	181473-0-01		181635-0-01	
A-32-2	Tension Spring	104525-0-01		145153-0-01	
A-32-6	Thread Take-up Spring	100399-0-01		145519-0-01	
A-33	Tension Release Pin	146065-0-00		146065-0-00	
A-37	Oil Cap	142274-0-01		142274-0-01	
A-40	Needle Plate	145971-0-01		147245-0-01	
B- 4	Thread Take-up Lever Assembly	116732-0-01		116732-0-01	
B- 4-3	Needle Roller Bearing	116735-0-00		116735-0-00	
B- 4-5	Cap	145690-0-00		145600-0-00	
B- 4-9	Needle Bar Connector	140353-0-01		140353-0-01	
B-12	Needle Bar	145467-0-01		145986-0-01	
B-14	Needle Bar Bushing Lower	117243-0-01		142116-0-01	
B-16	Needle Bar Thread Guide	145944-0-01		145944-0-01	
B-18	Needle	145971-0-01		147245-0-01	
B-22	Thread Take-up Crank	142782-0-00		111465-0-00	
B-45	Pulley	148823-0-01		148823-0-01	
C- 5	Feed Dog	100334-0-01		144500-0-01	
C-18	Lower Shaft	145517-0-01		145517-0-01	
C-19	Felt	145751-0-01		145751-0-01	
C-22	Screw	009681-0-12		009681-0-12	
C-23	Bobbin Case Assembly	148350-1-01		148350-1-01	
C-24	Bobbin Case Sheet				
C-26	Rotary Hook Assembly	145585-1-01		145585-1-01	
C-27	Oil Stopper Assembly				
C-47	Bobbin Presser Spring	148967-1-01		148967-1-01	
D- 4	Eccentric Wheel	180792-0-01		145269-0-01	
D-11	Spring	148459-0-01		148459-0-01	
D-15	Reverse Lever Assembly	181714-0-01		181714-0-01	
D-15-4	Reverse Lever	148458-0-01		148458-0-01	
E-12	Presser Foot	140957-0-01		145157-0-01	
E-13	Hinge Screw	109163-0-01		109163-0-01	
E-14	Tension Release Lever	111470-0-00		111470-0-00	
E-15	Tension Release Lever Spring	100405-0-01		100405-0-01	

Ref. No.	Name of Parts	403			405		
		Brother		Efka	Brother		Efka
				U.S.A., Canada			
E-24	Washer						
E-25	Finger Guard						
F-25	Oil Pan Assembly		181420-2-01			181420-2-01	
F-25-1	Oil Pan		149580-0-01			149580-0-01	
F-25-3	Knee Lifter Shaft		146036-1-01			146036-1-01	
F-25-8	Spring		146038-0-01			146038-0-01	
G-9	Screw						
G-10	Tension Release Solenoid Assembly	147107-0-01			147107-0-01		
G-13	Supporter						
G-14	Connector Cap	146119-0-00			146119-0-00		
G-15	Nylon Connector	145681-0-00			145681-0-00		
18	Thread Trimming Solenoid Assembly	146014-0-01			146014-0-01		
G-32	Movable Knife		145608-0-01			147981-0-01	
G-34	Spacer		145611-0-00			146187-0-00	
G-44	Rotary Solenoid		148852-0-01	151247-0-01		148852-0-01	
G-45	Thread Trimming Solenoid		146910-0-01	151187-0-01		146910-0-01	
G-46	Tube Holder						
G-47	Cord Holder						
G-48	Cord Holder		148856-0-01			148856-0-01	
G-49	Cord Holder		148462-0-01			148462-0-01	
H-2	Synchronizer Assembly	218931-0-01			218931-0-01		
H-3	Synchronizer Holder Bar		218944-0-01			218944-0-01	
H-5	Holder		216332-0-01			216332-0-01	
H-6	Slip Ring Support		148825-0-01			148825-0-01	
J-5	Cord	146095-0-00			146095-0-00		
27	Switch	146121-0-00			146121-0-00		
J-31	Cord		146912-0-00	151183-0-01		146912-0-00	
J-32	Switch		146913-0-00	151185-0-01		146913-0-00	
K-5	Reverse Solenoid Assembly	147756-0-01			147756-0-01		
K-6	6P Connector	146118-0-00			146118-0-00		
K-7	Connector Cap	145596-0-01			145596-0-01		
K-33	Reverse Solenoid		147757-0-01	151181-0-01		147757-0-01	
Z-6	Needle		100265-0-34			109265-0-42	
Z-8	Bobbin Case Sheet						
Z-20	Belt Cover Assembly		147895-0-11			147895-0-11	
Z-21	Needle Plate		100266-0-01			100266-0-01	
Z-22	Screw						
Z-24	Cotton Stand Assembly		150150-0-01	150150-0-01		150150-0-01	
Z-25	Movable Knife		145608-0-01			147981-0-01	

From the library of: Diamond Needle Corp.

Ref. No.	Name of Parts	Sub Class Motor Spec. Destination	503				505					
			Brother		Efka		Germany, France		U.S.A., Canada		Brother	
A-2	Oil Cap		104449-0-01				104449-0-01					
A-4	Face Plate		148330-0-01				148330-0-01					
A-6	Screw											
A-7	Face Plate Thread Guide											
A-8	Oil Stopper Plate Assembly		181641-0-01				181641-0-01					
A-20	Pretension Assembly											
A-21	Rear Cover		148452-0-01				148452-0-01					
A-32	Tension Regulator Assembly		181473-0-01				181635-0-01					
A-32-2	Tension Spring		104525-0-01				145153-0-01					
A-32-6	Thread Take-up Spring		100399-0-01				145519-0-01					
A-33	Tension Release Pin											
A-37	Oil Cap		142274-0-01				142274-0-01					
A-40	Needle Plate		145971-0-01				147245-0-01					
B-4	Thread Take-up Lever Assembly		116732-0-01				116732-0-01					
B-4-3	Needle Roller Bearing		116735-0-00				116735-0-00					
B-4-5	Cap		145600-0-00				145600-0-00					
B-4-9	Needle Bar Connector		140353-0-01				140353-0-01					
B-12	Needle Bar		145467-0-01		147518-0-01		145467-0-01		145985-0-01			
B-14	Needle Bar Bushing Lower		117243-0-01				142115-0-01					
B-16	Needle Bar Thread Guide		145944-0-01				145944-0-01					
B-18	Needle		100265-0-34		107415-0-14		100265-0-34		100265-0-42			
B-22	Thread Take-up Crank		142782-0-00				111465-0-00					
B-45	Pulley		148823-0-01				148823-0-01					
C-5	Feed Dog		100334-0-01				144500-0-01					
C-18	Lower Shaft		145517-0-01				145517-0-01					
C-19	Felt		145751-0-01				145751-0-01					
C-22	Screw		009681-0-12				009681-0-12					
C-23	Bobbin Case Assembly		148350-1-01				148350-1-01					
C-24	Bobbin Case Sheet											
C-26	Rotary Hook Assembly		145585-1-01				145585-1-01					
C-27	Oil Stopper Assembly											
C-47	Bobbin Presser Spring		148967-1-01				148967-1-01					
D-4	Eccentric Wheel		180792-0-01				145269-0-01					
D-11	Spring		145643-0-01				145643-0-01					
D-15	Reverse Lever Assembly		181714-0-01				181714-0-01					
D-15-4	Reverse Lever		148458-0-01				148458-0-01					
E-12	Presser Foot		140957-0-01				145157-0-01					
E-13	Hinge Screw											
E-14	Tension Release Lever											
E-15	Tension Release Lever Spring											

I N D E X

Ref. No.	Name of Parts	503				505			
		Brother		Efka		Brother		Efka	
Sub Class	Motor Spec.			Germany, France	U.S.A., Canada				
Destination									
E-24	Washer			025350-1-34					
E-25	Finger Guard			150384-0-01					
F-25	Oil Pan Assembly			181430-2-01				181430-2-01	
F-25-1	Oil Pan			149581-0-01				149581-0-01	
F-25-3	Knee Lifter Shaft			146069-0-01				146069-0-01	
F-25-8	Spring			146985-0-01				146985-0-01	
G-9	Screw								
G-10	Tension Release Solenoid Assembly	147107-0-01				147107-0-01			
G-13	Supporter								
G-14	Connector Cap	146119-0-00				146119-0-00			
G-15	Nylon Connector	145681-0-00				145681-0-00			
G-18	Thread Trimming Solenoid Assembly	146014-0-01				146014-0-01			
G-32	Movable Knife			145608-0-01				147981-0-01	
G-34	Spacer			145611-9-00				146187-0-00	
G-44	Rotary Solenoid			148852-0-01	151247-0-01			148852-0-01	
G-45	Thread Trimming Solenoid			146910-0-01	151187-0-01			146910-0-01	
G-46	Tube Holder								
G-47	Cord Holder			148462-0-01				148462-0-01	
G-48	Cord Holder								
G-49	Cord Holder								
H-2	Synchronizer Assembly	218931-0-01				218931-0-01			
H-3	Synchronizer Holder Bar			218944-0-01				218944-0-01	
H-5	Holder			216332-0-01				216332-0-01	
H-6	Slip Ring Support			148825-0-01				148825-0-01	
J-5	Cord			146095-0-00				146095-0-00	
J-7	Switch			146121-0-00				146121-0-00	
J-31	Cord			146912-0-00	151183-0-01			146912-0-00	
J-32	Switch			146913-0-00	151185-0-01			146913-0-00	
K-5	Reverse Solenoid Assembly								
K-6	6P Connector								
K-7	Connector Cap								
K-33	Reverse Solenoid								
Z-6	Needle	100265-0-34		107415-0-14	100265-0-34			100265-0-42	
Z-8	Bobbin Case Sheet								
Z-20	Belt Cover Assembly			147895-0-11				147895-0-11	
Z-21	Needle Plate			100266-0-01				100266-0-01	
Z-22	Screw								
Z-24	Cotton Stand Assembly	150150-0-01			150150-0-01			150150-0-01	
Z-25	Movable Knife			145608-0-01				147981-0-01	

From the library of: Diamond Needle Corp